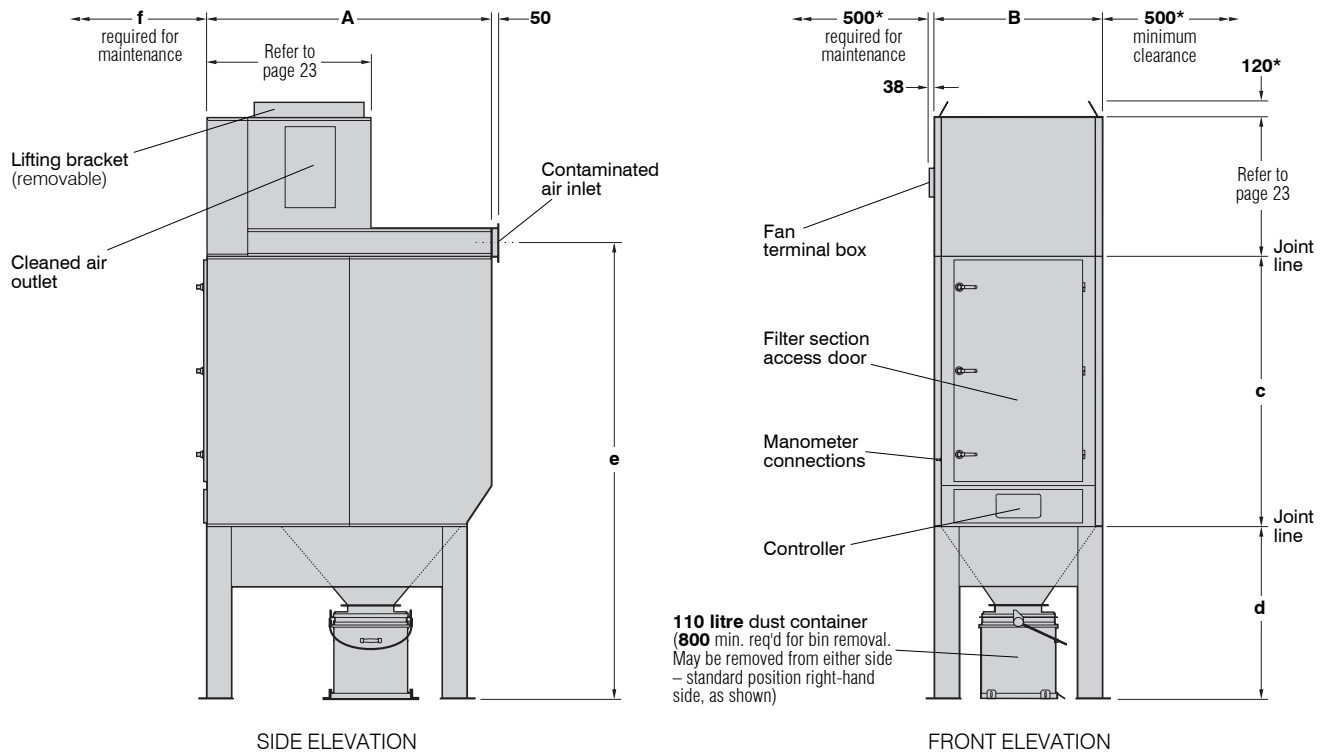


DCE 2000 Series Dust Collectors



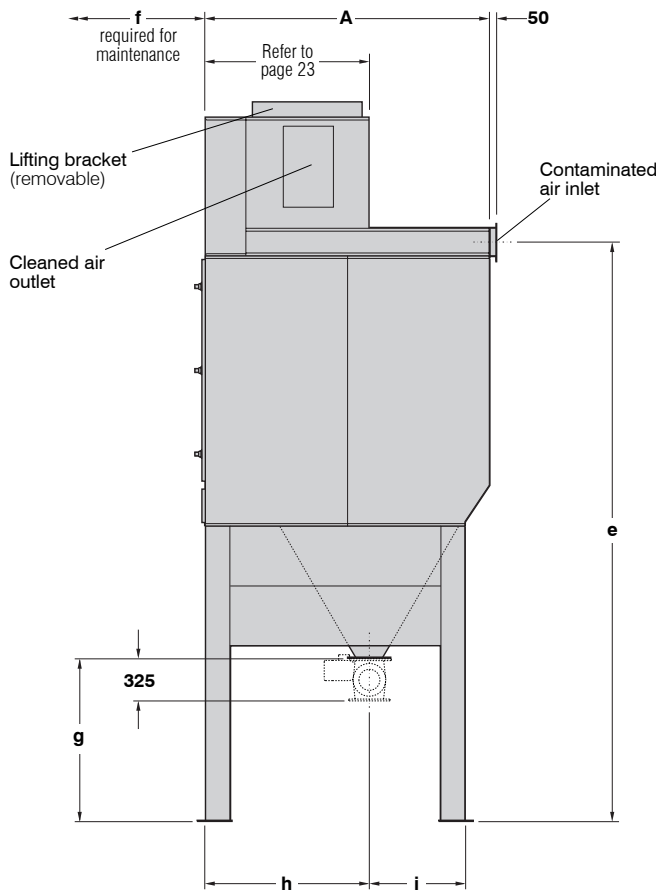
DCE 2000 series dust collector with dust container

DCE F2036 or F2045 illustrated

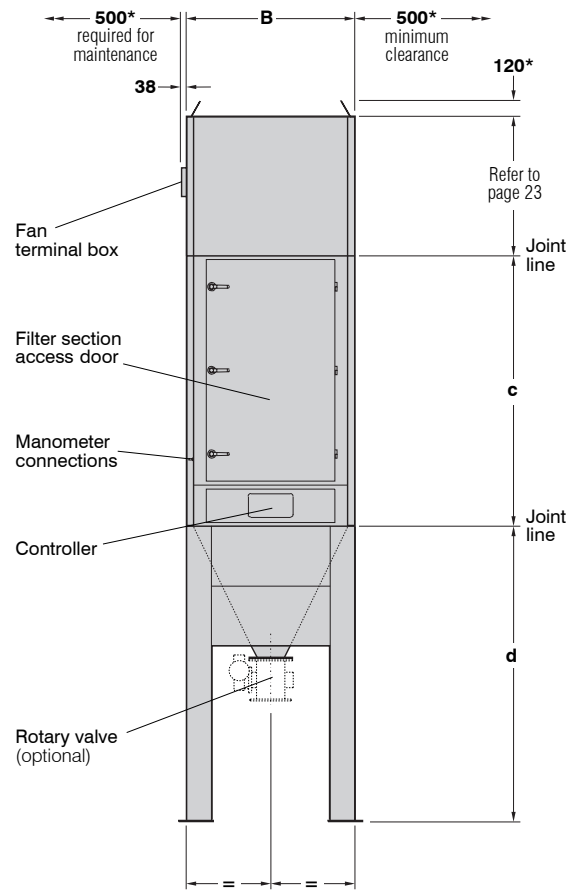
Type	Filtration area	SPECIFICATIONS					
		A	B	DIMENSIONS in mm			
				c	d	e	f
Fabric collectors:							
DCE F2012	12m ²	1600	888	1475	980	2555	1250
DCE F2018	18m ²	2100	888	1475	1275	2850	1750
DCE F2024	24m ²	2100	1240	1475	1275	2850	1750
DCE F2030	30m ²	2100	1240	1475	1275	2850	1750
DCE F2036	36m ²	2100	1240	2000	1275	3375	1750
DCE F2045	45m ²	2100	1240	2000	1275	3375	1750
Sintered element collectors:							
DCE S2021	20.8m ²	2100	888	1475	1275	2850	1500
DCE S2026	26.4m ²	2100	888	1475	1275	2850	1750
DCE S2031	31.2m ²	2100	888	1475	1275	2850	1500
DCE S2040	39.6m ²	2100	888	1475	1275	2850	1750
DCE S2053	52.8m ²	2100	1240	1475	1275	2850	1750
DCE S2066	66.0m ²	2100	1240	1475	1275	2850	1750
DCE S2080	79.2m ²	2100	1240	2000	1275	3375	1750
DCE S2100	99.0m ²	2100	1240	2000	1275	3375	1750

Refer to page 11 for fan availability * Refer also to page 24 for clearances required for fan removal

DCE 2000 Series Dust Collectors



SIDE ELEVATION



FRONT ELEVATION

DCE 2000 series dust collector with rotary valve

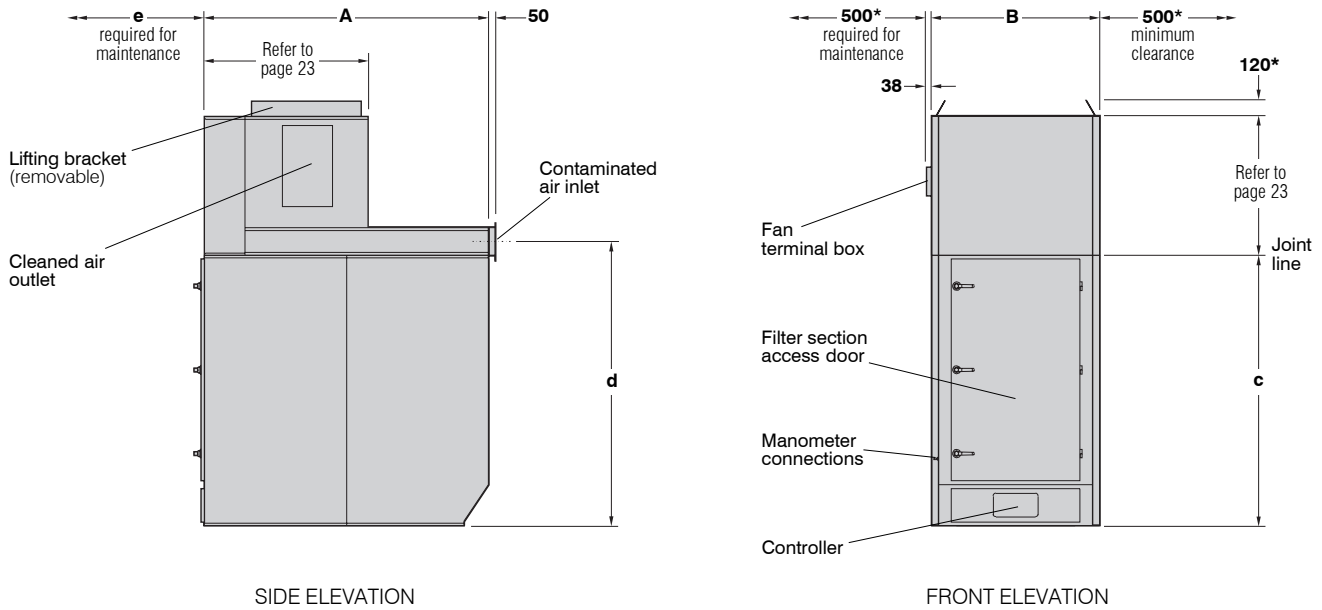
DCE F2036 R or F2045 R illustrated

SPECIFICATIONS

Type	Filtration area	DIMENSIONS in mm								
		A	B	c	d	e	f	g	h	i
Fabric collectors:										
DCE F2012 R	12m ²	1600	888	1475	1743	3310	1250	1206	960	460
DCE F2018 R	18m ²	2100	888	1475	2182	3750	1750	1206	1210	710
DCE F2024 R	24m ²	2100	1240	1475	2182	3750	1750	1206	1210	710
DCE F2030 R	30m ²	2100	1240	1475	2182	3750	1750	1206	1210	710
DCE F2036 R	36m ²	2100	1240	2000	2182	4275	1750	1206	1210	710
DCE F2045 R	45m ²	2100	1240	2000	2182	4275	1750	1206	1210	710
Sintered element collectors:										
DCE S2021 R	20.8m ²	2100	888	1475	2182	3750	1500	1206	1210	710
DCE S2026 R	26.4m ²	2100	888	1475	2182	3750	1750	1206	1210	710
DCE S2031 R	31.2m ²	2100	888	1475	2182	3750	1500	1206	1210	710
DCE S2040 R	39.6m ²	2100	888	1475	2182	3750	1750	1206	1210	710
DCE S2053 R	52.8m ²	2100	1240	1475	2182	3750	1750	1206	1210	710
DCE S2066 R	66.0m ²	2100	1240	1475	2182	3750	1750	1206	1210	710
DCE S2080 R	79.2m ²	2100	1240	2000	2182	4275	1750	1206	1210	710
DCE S2100 R	99.0m ²	2100	1240	2000	2182	4275	1750	1206	1210	710

Refer to page 11 for fan availability

* Refer also to page 24 for clearances required for fan removal



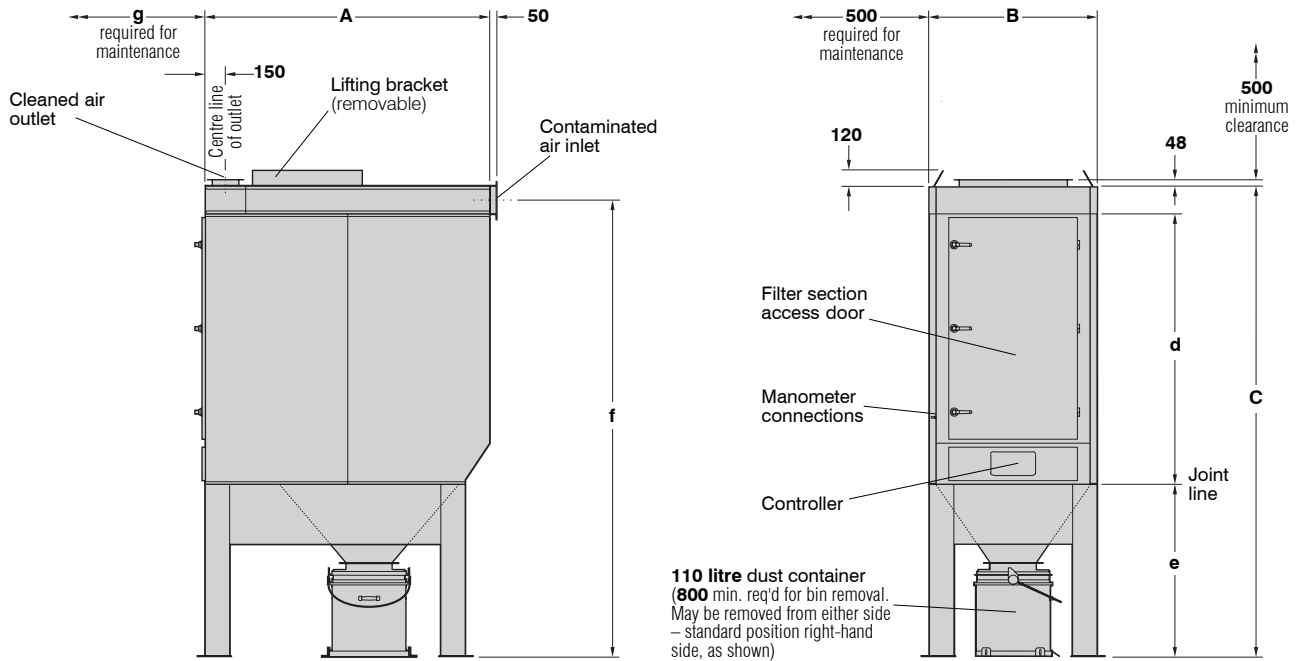
DCE 2000 series hopper type dust collector
DCE F2036 H or F2045 H illustrated

SPECIFICATIONS

Type	Filtration area	DIMENSIONS in mm				
		A	B	c	d	e
Fabric collectors:						
DCE F2012 H	12m ²	1600	888	1475	1575	1250
DCE F2018 H	18m ²	2100	888	1475	1575	1750
DCE F2024 H	24m ²	2100	1240	1475	1575	1750
DCE F2030 H	30m ²	2100	1240	1475	1575	1750
DCE F2036 H	36m ²	2100	1240	2000	2100	1750
DCE F2045 H	45m ²	2100	1240	2000	2100	1750
Sintered element collectors:						
DCE S2021 H	20.8m ²	2100	888	1475	1575	1500
DCE S2026 H	26.4m ²	2100	888	1475	1575	1750
DCE S2031 H	31.2m ²	2100	888	1475	1575	1500
DCE S2040 H	39.6m ²	2100	888	1475	1575	1750
DCE S2053 H	52.8m ²	2100	1240	1475	1575	1750
DCE S2066 H	66.0m ²	2100	1240	1475	1575	1750
DCE S2080 H	79.2m ²	2100	1240	2000	2100	1750
DCE S2100 H	99.0m ²	2100	1240	2000	2100	1750

Refer to page 11 for fan availability
* Refer also to page 24 for clearances required for fan removal

DCE 2000 Series Dust Collectors



SIDE ELEVATION

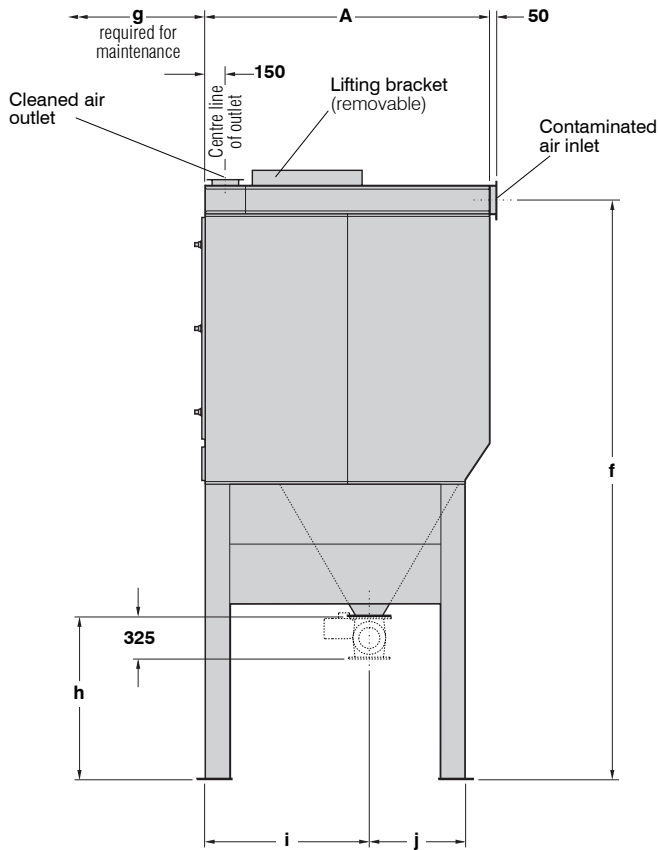
FRONT ELEVATION

DCE 2000 series venting type dust collector with dust container

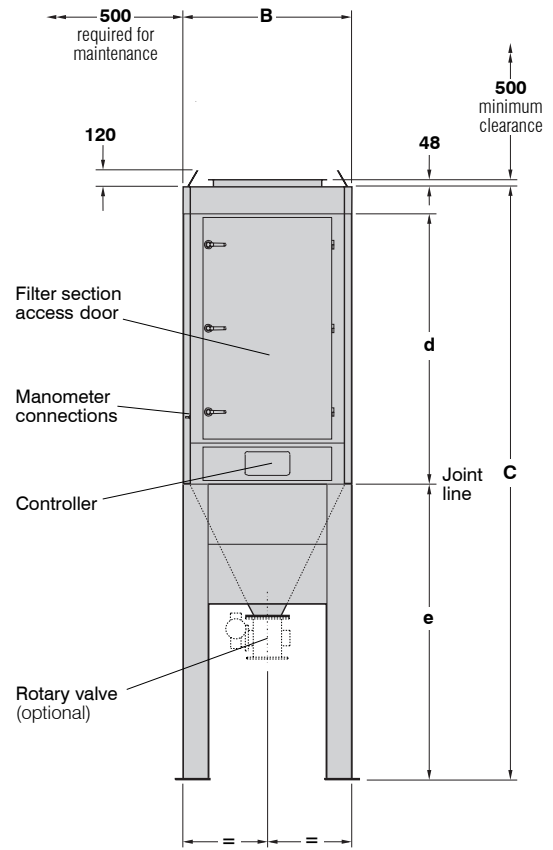
DCE F2036 V or F2045 V illustrated

SPECIFICATIONS

Type	Filtration area	DIMENSIONS in mm						
		A	B	C	d	e	f	g
Fabric collectors:								
DCE F2012 V	12m ²	1600	888	2655	1475	980	2555	1250
DCE F2018 V	18m ²	2100	888	2950	1475	1275	2850	1750
DCE F2024 V	24m ²	2100	1240	2950	1475	1275	2850	1750
DCE F2030 V	30m ²	2100	1240	2950	1475	1275	2850	1750
DCE F2036 V	36m ²	2100	1240	3475	2000	1275	3375	1750
DCE F2045 V	45m ²	2100	1240	3475	2000	1275	3375	1750
Sintered element collectors:								
DCE S2021 V	20.8m ²	2100	888	2950	1475	1275	2850	1500
DCE S2026 V	26.4m ²	2100	888	2950	1475	1275	2850	1750
DCE S2031 V	31.2m ²	2100	888	2950	1475	1275	2850	1500
DCE S2040 V	39.6m ²	2100	888	2950	1475	1275	2850	1750
DCE S2053 V	52.8m ²	2100	1240	2950	1475	1275	2850	1750
DCE S2066 V	66.0m ²	2100	1240	2950	1475	1275	2850	1750
DCE S2080 V	79.2m ²	2100	1240	3475	2000	1275	3375	1750
DCE S2100 V	99.0m ²	2100	1240	3475	2000	1275	3375	1750



SIDE ELEVATION



FRONT ELEVATION

DCE 2000 series venting type dust collector with rotary valve

DCE F2036 VR or F2045 VR illustrated

SPECIFICATIONS

Type	Filtration area	DIMENSIONS in mm									
		A	B	C	d	e	f	g	h	i	j
Fabric collectors:											
DCE F2012 VR	12m ²	1600	888	3410	1475	1743	3310	1250	1206	960	460
DCE F2018 VR	18m ²	2100	888	3850	1475	2182	3750	1750	1206	1210	710
DCE F2024 VR	24m ²	2100	1240	3850	1475	2182	3750	1750	1206	1210	710
DCE F2030 VR	30m ²	2100	1240	3850	1475	2182	3750	1750	1206	1210	710
DCE F2036 VR	36m ²	2100	1240	4375	2000	2182	4275	1750	1206	1210	710
DCE F2045 VR	45m ²	2100	1240	4375	2000	2182	4275	1750	1206	1210	710
Sintered element collectors:											
DCE S2021 VR	20.8m ²	2100	888	3850	1475	2182	3750	1500	1206	1210	710
DCE S2026 VR	26.4m ²	2100	888	3850	1475	2182	3750	1750	1206	1210	710
DCE S2031 VR	31.2m ²	2100	888	3850	1475	2182	3750	1500	1206	1210	710
DCE S2040 VR	39.6m ²	2100	888	3850	1475	2182	3750	1750	1206	1210	710
DCE S2053 VR	52.8m ²	2100	1240	3850	1475	2182	3750	1750	1206	1210	710
DCE S2066 VR	66.0m ²	2100	1240	3850	1475	2182	3750	1750	1206	1210	710
DCE S2080 VR	79.2m ²	2100	1240	4375	2000	2182	4275	1750	1206	1210	710
DCE S2100 VR	99.0m ²	2100	1240	4375	2000	2182	4275	1750	1206	1210	710

APPROXIMATE NET WEIGHTS
DCE 2000 Series dust collector with dust container

Type	Fan type	Unit only	Unit with secondary filter	Unit with absolute filter	Type	Fan type	Unit only	Unit with secondary filter	Unit with absolute filter
DCE F2012	K3	747 kg	792 kg	794 kg	DCE S2026	K3	826 kg	–	–
	K5	762 kg	807 kg	809 kg		K5	841 kg	–	–
	K7	797 kg	842 kg	844 kg		K7	876 kg	–	–
	SF40	846 kg	901 kg	902 kg		SF40	927 kg	992 kg	1000 kg
	SF55	852 kg	907 kg	908 kg		SF55	931 kg	996 kg	1004 kg
	SF75	902 kg	957 kg	958 kg		SF75	983 kg	1048 kg	1056 kg
DCE F2018	K3	863 kg	898 kg	900 kg	DCE S2031	K3	840 kg	–	–
	K5	878 kg	923 kg	925 kg		K5	855 kg	–	–
	K7	913 kg	958 kg	960 kg		K7	890 kg	–	–
	SF40	962 kg	1017 kg	1018 kg		SF40	914 kg	979 kg	990 kg
	SF55	966 kg	1021 kg	1022 kg		SF55	945 kg	1010 kg	1021 kg
	SF75	1018 kg	1073 kg	1074 kg		SF75	997 kg	1062 kg	1073 kg
DCE F2024	K3	1128 kg	1192 kg	1206 kg	DCE S2040	K3	863 kg	–	–
	K5	1153 kg	1217 kg	1231 kg		K5	878 kg	–	–
	K7	1188 kg	1252 kg	1266 kg		K7	913 kg	–	–
	K10	1208 kg	1272 kg	1286 kg		SF40	962 kg	1027 kg	1038 kg
	K11	1268 kg	1332 kg	1346 kg		SF55	966 kg	1031 kg	1042 kg
	SF40	1294 kg	1234 kg	1249 kg		SF75	1018 kg	1083 kg	1094 kg
	SF55	1298 kg	1238 kg	1253 kg	DCE S2053	K3	1128 kg	–	–
	SF75	1350 kg	1290 kg	1305 kg		K5	1153 kg	–	–
	SF110	1394 kg	1334 kg	1349 kg		K7	1188 kg	–	–
	SF150	1430 kg	1370 kg	1385 kg		K10	1208 kg	–	–
	SF185	1583 kg	1523 kg	1538 kg		K11	1268 kg	–	–
DCE F2030	K3	1163 kg	1227 kg	1241 kg		SF40	1294 kg	1341 kg	1277 kg
	K5	1178 kg	1242 kg	1256 kg		SF55	1298 kg	1245 kg	1281 kg
	K7	1213 kg	1277 kg	1291 kg		SF75	1350 kg	1297 kg	1333 kg
	K10	1233 kg	1297 kg	1311 kg		SF110	1394 kg	1341 kg	1377 kg
	K11	1293 kg	1357 kg	1371 kg		SF150	1430 kg	1377 kg	1413 kg
	SF40	1329 kg	1269 kg	1284 kg		SF185	1583 kg	1530 kg	1566 kg
	SF55	1333 kg	1273 kg	1288 kg	DCE S2066	K3	1163 kg	–	–
	SF75	1385 kg	1325 kg	1340 kg		K5	1178 kg	–	–
	SF110	1429 kg	1369 kg	1384 kg		K7	1213 kg	–	–
	SF150	1465 kg	1405 kg	1420 kg		K10	1233 kg	–	–
	SF185	1618 kg	1558 kg	1573 kg		K11	1293 kg	–	–
DCE F2036	K3	1334 kg	1424 kg	1444 kg		SF40	1329 kg	1276 kg	1312 kg
	K5	1349 kg	1439 kg	1459 kg		SF55	1333 kg	1280 kg	1316 kg
	K7	1384 kg	1474 kg	1494 kg		SF75	1385 kg	1332 kg	1368 kg
	K10	1436 kg	1494 kg	1514 kg		SF110	1429 kg	1376 kg	1412 kg
	K11	1496 kg	1554 kg	1574 kg		SF150	1465 kg	1412 kg	1448 kg
	SF40	1532 kg	1466 kg	1487 kg		SF185	1618 kg	1565 kg	1601 kg
	SF55	1536 kg	1470 kg	1491 kg	DCE S2080	K3	1369 kg	–	–
	SF75	1588 kg	1522 kg	1543 kg		K5	1384 kg	–	–
	SF110	1632 kg	1566 kg	1587 kg		K7	1419 kg	–	–
	SF150	1668 kg	1602 kg	1623 kg		K10	1436 kg	–	–
	SF185	1821 kg	1755 kg	1776 kg		K11	1496 kg	–	–
DCE F2045	K3	1432 kg	1490 kg	1539 kg		SF40	1532 kg	–	–
	K5	1447 kg	1505 kg	1554 kg		SF55	1536 kg	–	–
	K7	1482 kg	1540 kg	1589 kg		SF75	1588 kg	–	–
	K10	1502 kg	1560 kg	1609 kg		SF110	1632 kg	–	–
	K11	1562 kg	1620 kg	1669 kg		SF150	1668 kg	–	–
	SF40	1598 kg	1532 kg	1582 kg		SF185	1821 kg	–	–
	SF55	1602 kg	1536 kg	1586 kg	DCE S2100	K3	1432 kg	–	–
	SF75	1654 kg	1588 kg	1638 kg		K5	1447 kg	–	–
	SF110	1698 kg	1632 kg	1682 kg		K7	1482 kg	–	–
	SF150	1734 kg	1668 kg	1718 kg		K10	1502 kg	–	–
	SF185	1888 kg	1822 kg	1872 kg		K11	1562 kg	–	–
DCE S2021	K3	809 kg	–	–		SF40	1598 kg	–	–
	K5	824 kg	–	–		SF55	1602 kg	–	–
	K7	859 kg	–	–		SF75	1654 kg	–	–
	SF40	910 kg	975 kg	982 kg		SF110	1698 kg	–	–
	SF55	914 kg	979 kg	986 kg		SF150	1734 kg	–	–
	SF75	966 kg	1031 kg	1038 kg		SF185	1888 kg	–	–

All weights shown indicate heaviest configuration

APPROXIMATE NET WEIGHTS

DCE 2000 Series dust collector with rotary valve

Type	Fan type	Unit only	Unit with secondary filter	Unit with absolute filter	Type	Fan type	Unit only	Unit with secondary filter	Unit with absolute filter
DCE F2012 R	K3	746 kg	791 kg	793 kg	DCE S2026 R	K3	904 kg	–	–
	K5	761 kg	806 kg	808 kg		K5	919 kg	–	–
	K7	796 kg	841 kg	843 kg		K7	954 kg	–	–
	SF40	845 kg	900 kg	901 kg		SF40	1005 kg	1070 kg	1078 kg
	SF55	849 kg	906 kg	907 kg		SF55	1009 kg	1074 kg	1082 kg
	SF75	901 kg	956 kg	957 kg		SF75	1061 kg	1126 kg	1134 kg
DCE F2018 R	K3	941 kg	976 kg	978 kg	DCE S2031 R	K3	918 kg	–	–
	K5	956 kg	1001 kg	1003 kg		K5	933 kg	–	–
	K7	991 kg	1036 kg	1038 kg		K7	968 kg	–	–
	SF40	1040 kg	1095 kg	1096 kg		SF40	1019 kg	1084 kg	1095 kg
	SF55	1044 kg	1099 kg	1100 kg		SF55	1023 kg	1088 kg	1099 kg
	SF75	1096 kg	1151 kg	1152 kg		SF75	1075 kg	1140 kg	1151 kg
DCE F2024 R	K3	1160 kg	1224 kg	1238 kg	DCE S2040 R	K3	941 kg	–	–
	K5	1185 kg	1249 kg	1263 kg		K5	956 kg	–	–
	K7	1220 kg	1284 kg	1298 kg		K7	991 kg	–	–
	K10	1240 kg	1304 kg	1318 kg		SF40	1040 kg	1105 kg	1116 kg
	K11	1300 kg	1364 kg	1378 kg		SF55	1044 kg	1109 kg	1120 kg
	SF40	1326 kg	1266 kg	1281 kg		SF75	1096 kg	1161 kg	1172 kg
	SF55	1330 kg	1270 kg	1285 kg	DCE S2053 R	K3	1160 kg	–	–
	SF75	1382 kg	1322 kg	1347 kg		K5	1185 kg	–	–
	SF110	1426 kg	1366 kg	1381 kg		K7	1220 kg	–	–
	SF150	1462 kg	1402 kg	1417 kg		K10	1240 kg	–	–
	SF185	1615 kg	1555 kg	1570 kg		K11	1300 kg	–	–
DCE F2030 R	K3	1195 kg	1259 kg	1273 kg	SF40	1326 kg	1273 kg	1309 kg	
	K5	1210 kg	1274 kg	1288 kg	SF55	1330 kg	1277 kg	1313 kg	
	K7	1245 kg	1309 kg	1323 kg	SF75	1382 kg	1327 kg	1363 kg	
	K10	1265 kg	1329 kg	1343 kg	SF110	1426 kg	1373 kg	1407 kg	
	K11	1325 kg	1389 kg	1403 kg	SF150	1462 kg	1409 kg	1445 kg	
	SF40	1361 kg	1301 kg	1316 kg	SF185	1615 kg	1562 kg	1598 kg	
	SF55	1365 kg	1305 kg	1320 kg	DCE S2066 R	K3	1195 kg	–	–
	SF75	1417 kg	1357 kg	1372 kg		K5	1210 kg	–	–
	SF110	1461 kg	1401 kg	1416 kg		K7	1245 kg	–	–
	SF150	1497 kg	1437 kg	1452 kg		K10	1265 kg	–	–
	SF185	1650 kg	1590 kg	1605 kg		K11	1325 kg	–	–
DCE F2036 R	K3	1366 kg	1456 kg	1466 kg		SF40	1361 kg	1308 kg	1344 kg
	K5	1381 kg	1471 kg	1481 kg	SF55	1365 kg	1312 kg	1348 kg	
	K7	1316 kg	1506 kg	1526 kg	SF75	1417 kg	1364 kg	1400 kg	
	K10	1468 kg	1526 kg	1546 kg	SF110	1461 kg	1408 kg	1444 kg	
	K11	1528 kg	1586 kg	1606 kg	SF150	1497 kg	1444 kg	1480 kg	
	SF40	1564 kg	1498 kg	1519 kg	SF185	1650 kg	1597 kg	1633 kg	
	SF55	1568 kg	1502 kg	1523 kg	DCE S2080 R	K3	1401 kg	–	–
	SF75	1620 kg	1554 kg	1575 kg		K5	1416 kg	–	–
	SF110	1664 kg	1598 kg	1619 kg		K7	1351 kg	–	–
	SF150	1700 kg	1634 kg	1655 kg		K10	1468 kg	–	–
	SF185	1853 kg	1787 kg	1808 kg		K11	1528 kg	–	–
DCE F2045 R	K3	1464 kg	1522 kg	1571 kg		SF40	1564 kg	–	–
	K5	1479 kg	1537 kg	1586 kg	SF55	1568 kg	–	–	
	K7	1514 kg	1572 kg	1621 kg	SF75	1620 kg	–	–	
	K10	1534 kg	1592 kg	1641 kg	SF110	1664 kg	–	–	
	K11	1594 kg	1652 kg	1701 kg	SF150	1700 kg	–	–	
	SF40	1630 kg	1564 kg	1614 kg	SF185	1853 kg	–	–	
	SF55	1634 kg	1568 kg	1618 kg	DCE S2100 R	K3	1464 kg	–	–
	SF75	1686 kg	1620 kg	1670 kg		K5	1479 kg	–	–
	SF110	1730 kg	1664 kg	1714 kg		K7	1514 kg	–	–
	SF150	1766 kg	1700 kg	1750 kg		K10	1534 kg	–	–
	SF185	1920 kg	1854 kg	1904 kg		K11	1594 kg	–	–
DCE S2021 R	K3	887 kg	–	–		SF40	1630 kg	–	–
	K5	902 kg	–	–	SF55	1634 kg	–	–	
	K7	937 kg	–	–	SF75	1686 kg	–	–	
	SF40	988 kg	1053 kg	1060 kg	SF110	1730 kg	–	–	
	SF55	992 kg	1057 kg	1064 kg	SF150	1766 kg	–	–	
	SF75	1044 kg	1109 kg	1116 kg	SF185	1920 kg	–	–	

All weights shown indicate heaviest configuration

APPROXIMATE NET WEIGHTS
DCE 2000 Series hopper type dust collector

Type	Fan type	Unit only	Unit with secondary filter	Unit with absolute filter	Type	Fan type	Unit only	Unit with secondary filter	Unit with absolute filter
DCE F2012 H	K3	594 kg	639 kg	641 kg	DCE S2026 H	K3	631 kg	–	–
	K5	609 kg	654 kg	656 kg		K5	646 kg	–	–
	K7	644 kg	689 kg	691 kg		K7	681 kg	–	–
	SF40	693 kg	748 kg	749 kg		SF40	732 kg	797 kg	805 kg
	SF55	697 kg	752 kg	753 kg		SF55	736 kg	801 kg	809 kg
	SF75	749 kg	804 kg	805 kg		SF75	788 kg	853 kg	861 kg
DCE F2018 H	K3	668 kg	703 kg	705 kg	DCE S2031 H	K3	645 kg	–	–
	K5	683 kg	728 kg	730 kg		K5	660 kg	–	–
	K7	718 kg	763 kg	765 kg		K7	695 kg	–	–
	SF40	767 kg	822 kg	823 kg		SF40	746 kg	811 kg	822 kg
	SF55	771 kg	826 kg	827 kg		SF55	750 kg	815 kg	826 kg
	SF75	823 kg	878 kg	879 kg		SF75	802 kg	867 kg	878 kg
DCE F2024 H	K3	867 kg	931 kg	945 kg	DCE S2040 H	K3	668 kg	–	–
	K5	892 kg	956 kg	970 kg		K5	683 kg	–	–
	K7	927 kg	991 kg	1005 kg		K7	718 kg	–	–
	K10	947 kg	1011 kg	1025 kg		SF40	767 kg	832 kg	843 kg
	K11	1007 kg	1071 kg	1085 kg		SF55	771 kg	836 kg	847 kg
	SF40	1033 kg	973 kg	988 kg		SF75	823 kg	888 kg	899 kg
	SF55	1037 kg	977 kg	992 kg	DCE S2053 H	K3	867 kg	–	–
	SF75	1089 kg	1029 kg	1044 kg		K5	892 kg	–	–
	SF110	1133 kg	1073 kg	1088 kg		K7	927 kg	–	–
	SF150	1169 kg	1109 kg	1124 kg		K10	947 kg	–	–
	SF185	1322 kg	1262 kg	1277 kg		K11	1007 kg	–	–
DCE F2030 H	K3	902 kg	966 kg	980 kg	SF40	1033 kg	980 kg	1016 kg	
	K5	917 kg	981 kg	995 kg	SF55	1037 kg	984 kg	1020 kg	
	K7	952 kg	1015 kg	1030 kg	SF75	1089 kg	1036 kg	1072 kg	
	K10	972 kg	1036 kg	1050 kg	SF110	1133 kg	1080 kg	1116 kg	
	K11	1032 kg	1096 kg	1110 kg	SF150	1169 kg	1116 kg	1152 kg	
	SF40	1068 kg	1008 kg	1023 kg	SF185	1322 kg	1269 kg	1305 kg	
	SF55	1072 kg	1012 kg	1027 kg	DCE S2066 H	K3	902 kg	–	–
	SF75	1124 kg	1064 kg	1079 kg		K5	917 kg	–	–
	SF110	1168 kg	1108 kg	1133 kg		K7	952 kg	–	–
	SF150	1204 kg	1144 kg	1159 kg		K10	972 kg	–	–
	SF185	1357 kg	1297 kg	1312 kg		K11	1032 kg	–	–
DCE F2036 H	K3	1073 kg	1163 kg	1183 kg		SF40	1068 kg	1015 kg	1051 kg
	K5	1088 kg	1178 kg	1198 kg	SF55	1072 kg	1019 kg	1055 kg	
	K7	1123 kg	1213 kg	1233 kg	SF75	1124 kg	1071 kg	1107 kg	
	K10	1175 kg	1233 kg	1253 kg	SF110	1168 kg	1115 kg	1151 kg	
	K11	1235 kg	1293 kg	1313 kg	SF150	1204 kg	1151 kg	1187 kg	
	SF40	1271 kg	1205 kg	1226 kg	SF185	1357 kg	1304 kg	1340 kg	
	SF55	1275 kg	1209 kg	1230 kg	DCE S2080 H	K3	1108 kg	–	–
	SF75	1327 kg	1261 kg	1282 kg		K5	1123 kg	–	–
	SF110	1371 kg	1305 kg	1326 kg		K7	1055 kg	–	–
	SF150	1407 kg	1341 kg	1362 kg		K10	1175 kg	–	–
	SF185	1660 kg	1594 kg	1615 kg		K11	1235 kg	–	–
DCE F2045 H	K3	1171 kg	1229 kg	1278 kg		SF40	1271 kg	–	–
	K5	1186 kg	1244 kg	1293 kg	SF55	1275 kg	–	–	
	K7	1221 kg	1279 kg	1328 kg	SF75	1327 kg	–	–	
	K10	1241 kg	1299 kg	1348 kg	SF110	1371 kg	–	–	
	K11	1301 kg	1359 kg	1408 kg	SF150	1407 kg	–	–	
	SF40	1337 kg	1271 kg	1321 kg	SF185	1560 kg	–	–	
	SF55	1341 kg	1275 kg	1325 kg	DCE S2100 H	K3	1171 kg	–	–
	SF75	1393 kg	1327 kg	1377 kg		K5	1186 kg	–	–
	SF110	1437 kg	1371 kg	1421 kg		K7	1221 kg	–	–
	SF150	1473 kg	1407 kg	1457 kg		K10	1241 kg	–	–
	SF185	1627 kg	1561 kg	1611 kg		K11	1301 kg	–	–
DCE S2021 H	K3	614 kg	–	–		SF40	1337 kg	–	–
	K5	629 kg	–	–	SF55	1341 kg	–	–	
	K7	664 kg	–	–	SF75	1393 kg	–	–	
	SF40	715 kg	780 kg	787 kg	SF110	1437 kg	–	–	
	SF55	719 kg	784 kg	791 kg	SF150	1473 kg	–	–	
	SF75	771 kg	836 kg	843 kg	SF185	1627 kg	–	–	

All weights shown indicate heaviest configuration

APPROXIMATE NET WEIGHTS

DCE 2000 Series venting type dust collector with dust container

Type	Fan type	Unit only	Unit with secondary filter	Unit with absolute filter
DCE F2012 V	-	720 kg	-	-
DCE F2018 V	-	856 kg	-	-
DCE F2024 V	-	1118 kg	-	-
DCE F2030 V	-	1152 kg	-	-
DCE F2036 V	-	1420 kg	-	-
DCE F2045 V	-	1486 kg	-	-
DCE S2021 V	-	811 kg	-	-
DCE S2026 V	-	830 kg	-	-
DCE S2031 V	-	843 kg	-	-
DCE S2040 V	-	857 kg	-	-
DCE S2053 V	-	1118 kg	-	-
DCE S2066 V	-	1152 kg	-	-
DCE S2080 V	-	1420 kg	-	-
DCE S2100 V	-	1486 kg	-	-

DCE 2000 Series venting type dust collector with rotary valve

Type	Fan type	Unit only	Unit with secondary filter	Unit with absolute filter
DCE F2012 VR	-	719 kg	-	-
DCE F2018 VR	-	924 kg	-	-
DCE F2024 VR	-	1140 kg	-	-
DCE F2030 VR	-	1174 kg	-	-
DCE F2036 VR	-	1442 kg	-	-
DCE F2045 VR	-	1508 kg	-	-
DCE S2021 VR	-	879 kg	-	-
DCE S2026 VR	-	898 kg	-	-
DCE S2031 VR	-	911 kg	-	-
DCE S2040 VR	-	925 kg	-	-
DCE S2053 VR	-	1140 kg	-	-
DCE S2066 VR	-	1174 kg	-	-
DCE S2080 VR	-	1442 kg	-	-
DCE S2100 VR	-	1508 kg	-	-

All weights shown indicate heaviest configuration

NOISE LEVELS

Machinery noise levels are an important consideration in the design and selection of new equipment. Several EC Directives and National Laws/Regulations adopting these directives make reference to airborne noise emissions. Actions that employers are required to comply with if employees are subjected to a daily personal noise exposure $L_{ep,d}$ of 80 dB(A) or more are also specified

All DCE 2000 series dust collectors, when fitted with an acoustic diffuser, secondary filter or absolute filter, operating an 8 hour shift, are below this action limit

WEIGHTED SOUND PRESSURE LEVELS

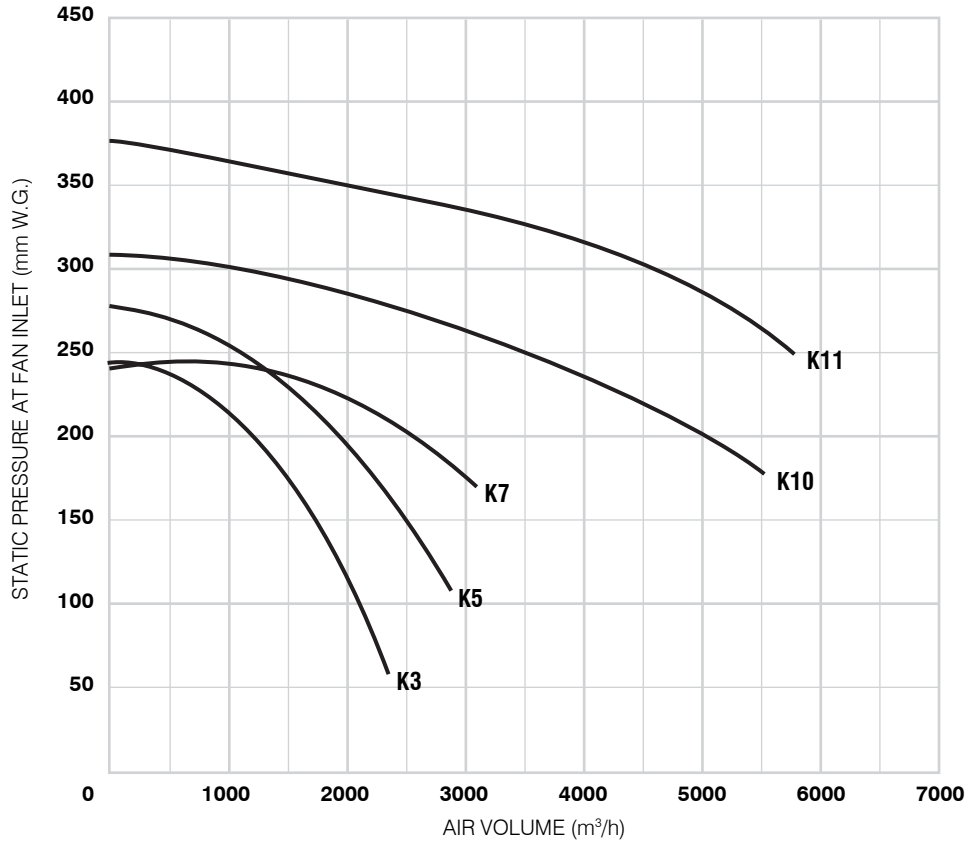
All readings were taken in normal industrial areas, i.e. semi-reverberant surroundings, with local equipment silent. Measurements were taken at maximum air flow conditions at 1.0 metre radius from the equipment housing and 1.6 metres above base level, using a precision sound level meter and octave filter.

Collectors tested were of standard configuration i.e. with acoustic diffuser

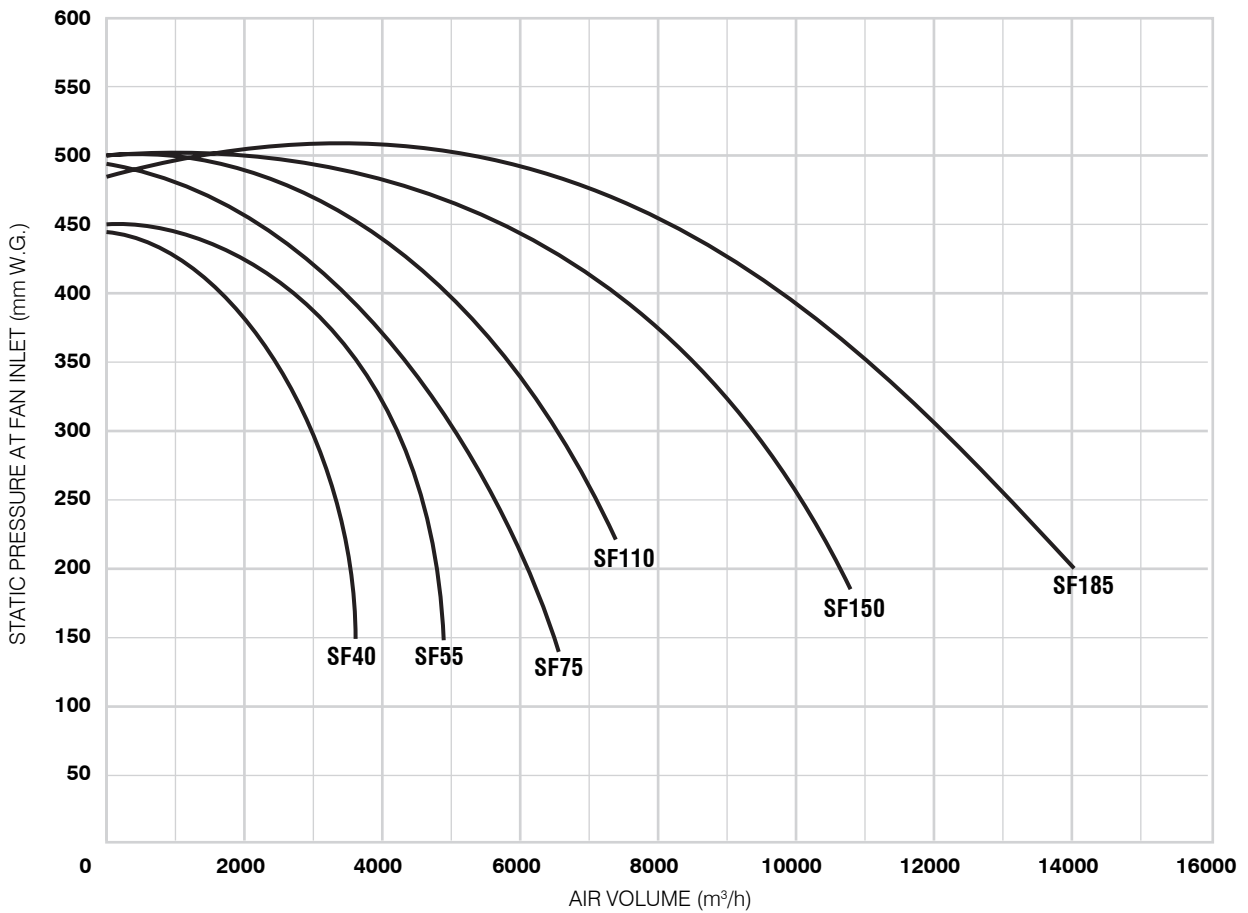
K3	K5	K7	K10	K11	SF40	SF55	SF75	SF110	SF150	SF185
66 dB(A)	71dB(A)	72 dB(A)	74 dB(A)	75 dB(A)*	74 dB(A)	73 dB(A)	75 dB(A)*	78 dB(A)	77 dB(A)	78 dB(A)

Noise levels of installed equipment may vary due to site conditions *Measured data

K type fans



SF type fans



Fan performance curves

FAN SELECTION

These curves indicate static pressure available at fan inlet for a given volume when fitted inside a DCE 2000 series dust collector.

To select the most suitable fan for a given application:

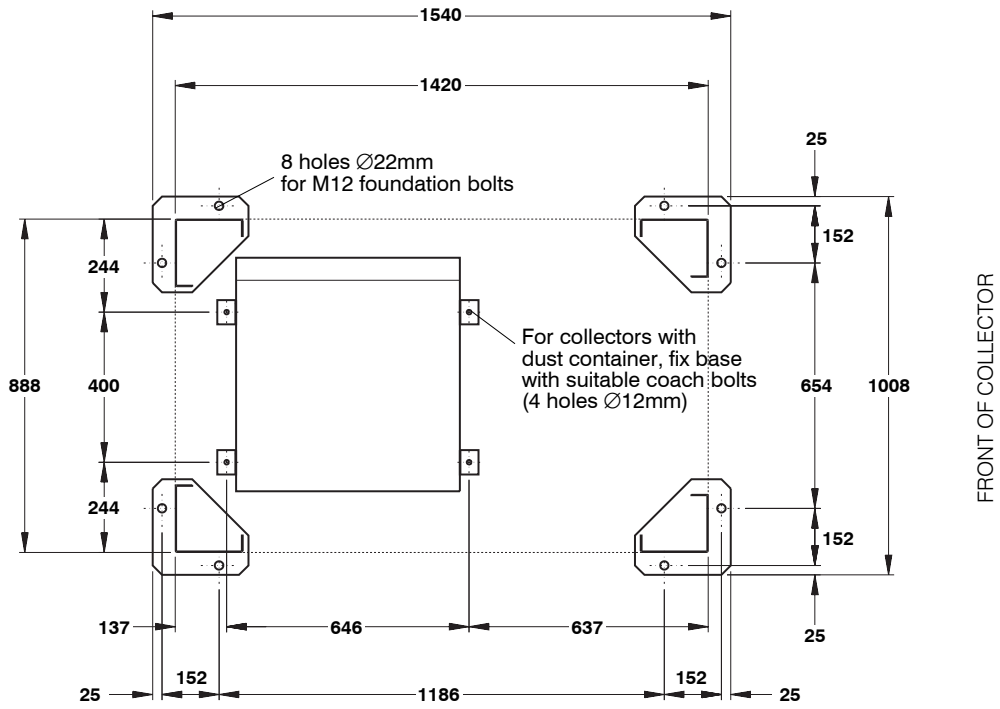
- 1 Determine the air volume, in m³/h, needed to entrain the dust.
- 2 Estimate pressure drop through connected system – i.e. between point of entrainment and collector inlet.
- 3 Assess pressure drop over dust collector prior to cleaning, usually 75 to 125 mm W.G. for collectors fitted with fabric elements, or 165 to 265 mm W.G. for collectors fitted with sintered elements.
- 4 The sum of **2** and **3** = W.G. required.
- 5 Consult graph for fan performances available.

FAN AVAILABILITY

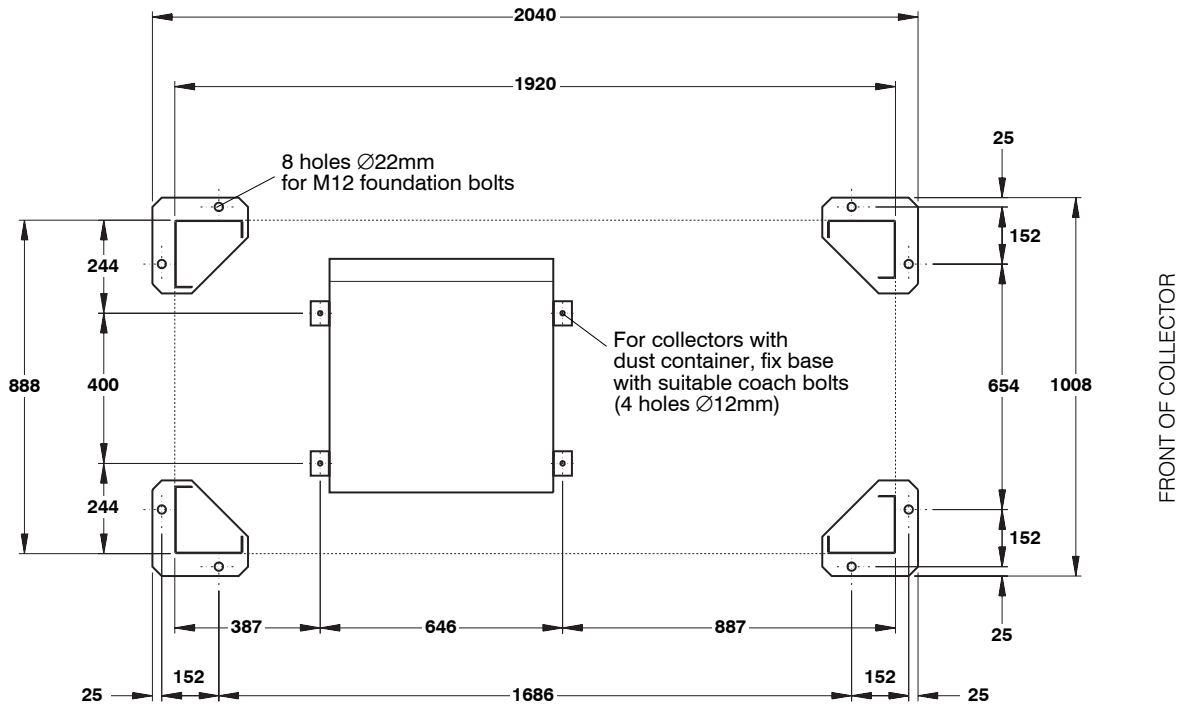
Fan type:	K3	K5	K7	K10	K11	SF40	SF55	SF75	SF110	SF150	SF185
Motor rating:	1.5 kW	2.2 kW	3.0 kW	5.5 kW	7.5 kW	4.0 kW	5.5 kW	7.5 kW	11.0 kW	15.0 kW	18.5 kW
DCE F2012											
unit only:	✓*	✓*	✓	✗	✗	✓	✓	✓	✗	✗	✗
with secondary or absolute filter:	✓*	✓*	✓	✗	✗	✓	✓	✓	✗	✗	✗
DCE F2018											
unit only:	✓	✓*	✓*	✗	✗	✓	✓	✓	✗	✗	✗
with secondary or absolute filter:	✓	✓*	✓*	✗	✗	✓	✓	✓	✗	✗	✗
DCE F2024											
unit only:	✓	✓*	✓*	✓	✓	✓	✓	✓	✓	✓	✓
with secondary or absolute filter:	✓	✓*	✓*	✓	✓	✓	✓	✓	✓	✓	✓
DCE F2030, F2036 and F2045											
unit only:	✓	✓	✓	✓*	✓*	✓	✓	✓	✓	✓	✓
with secondary or absolute filter:	✓	✓	✓	✓*	✓*	✓	✓	✓	✓	✓	✓
DCE S2021											
unit only:	✓	✓	✓	✗	✗	✓*	✓	✓	✗	✗	✗
with secondary or absolute filter:	✗	✗	✗	✗	✗	✓*	✓	✓	✗	✗	✗
DCE S2026 and S2031											
unit only:	✓	✓	✓	✗	✗	✓	✓*	✓	✗	✗	✗
with secondary or absolute filter:	✗	✗	✗	✗	✗	✓	✓*	✓	✗	✗	✗
DCE S2040											
unit only:	✓	✓	✓	✗	✗	✓	✓	✓*	✗	✗	✗
with secondary or absolute filter:	✗	✗	✗	✗	✗	✓	✓	✓*	✗	✗	✗
DCE S2053											
unit only:	✓	✓	✓	✓	✓	✓	✓	✓	✓*	✓	✓
with secondary or absolute filter:	✗	✗	✗	✗	✗	✓	✓	✓	✓*	✓	✓
DCE S2066											
unit only:	✓	✓	✓	✓	✓	✓	✓	✓	✓	✓*	✓
with secondary or absolute filter:	✗	✗	✗	✗	✗	✓	✓	✓	✓	✓*	✓
DCE S2080											
unit only:	✓	✓	✓	✓	✓	✓	✓	✓	✓	✓*	✓
with secondary or absolute filter:	✗	✗	✗	✗	✗	✗	✗	✗	✗	✗	✗
DCE S2100											
unit only:	✓	✓	✓	✓	✓	✓	✓	✓	✓	✓	✓*
with secondary or absolute filter:	✗	✗	✗	✗	✗	✗	✗	✗	✗	✗	✗*

An acoustic diffuser is fitted as standard

* Recommended fan configuration. Other combinations are possible as shown, however, selecting a larger fan may lead to unacceptable filtration rates

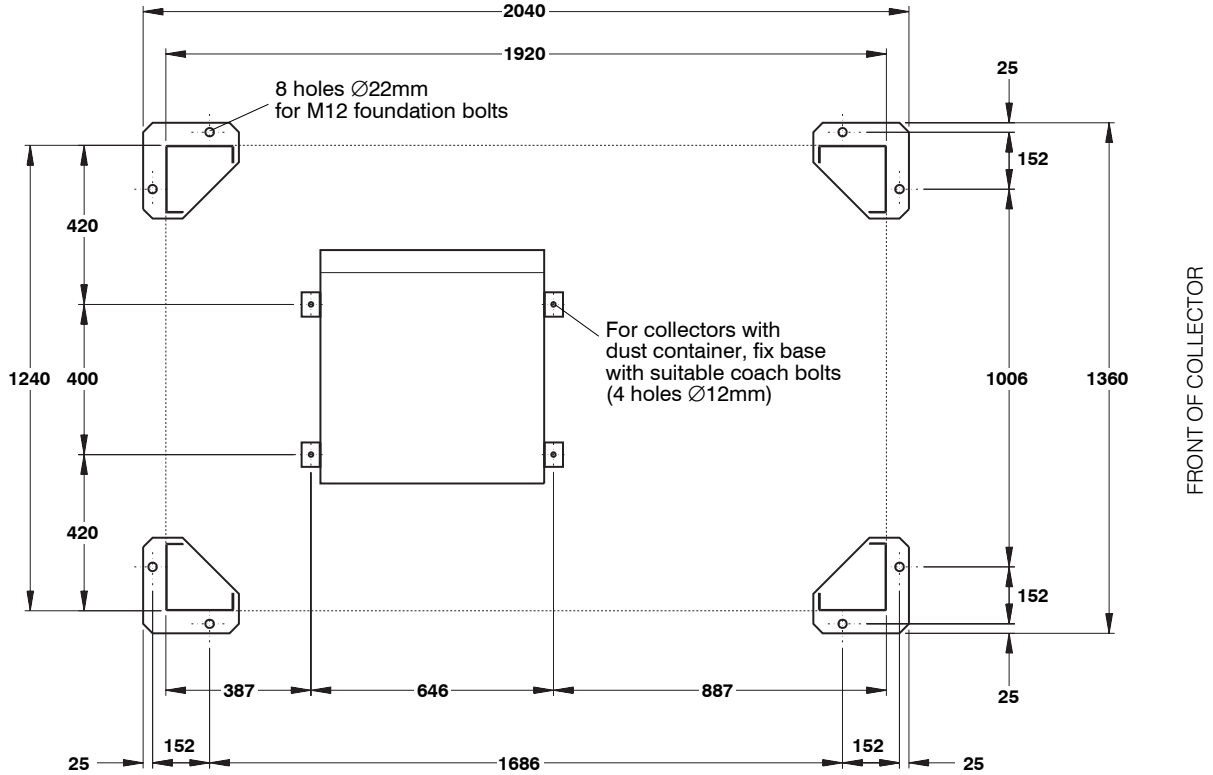


DCE F2012



DCE F2018, S2021, S2026, S2031 and S2040

Foundation details for standard and venting type collectors with dust container or rotary valve



DCE F2024, F2030, F2036, F2045, S2053, S2066, S2080 and S2100

Foundation details for standard and venting type collectors with dust container or rotary valve

ELECTRICAL REQUIREMENTS

DCE S2021 and S2026: 4-way controller

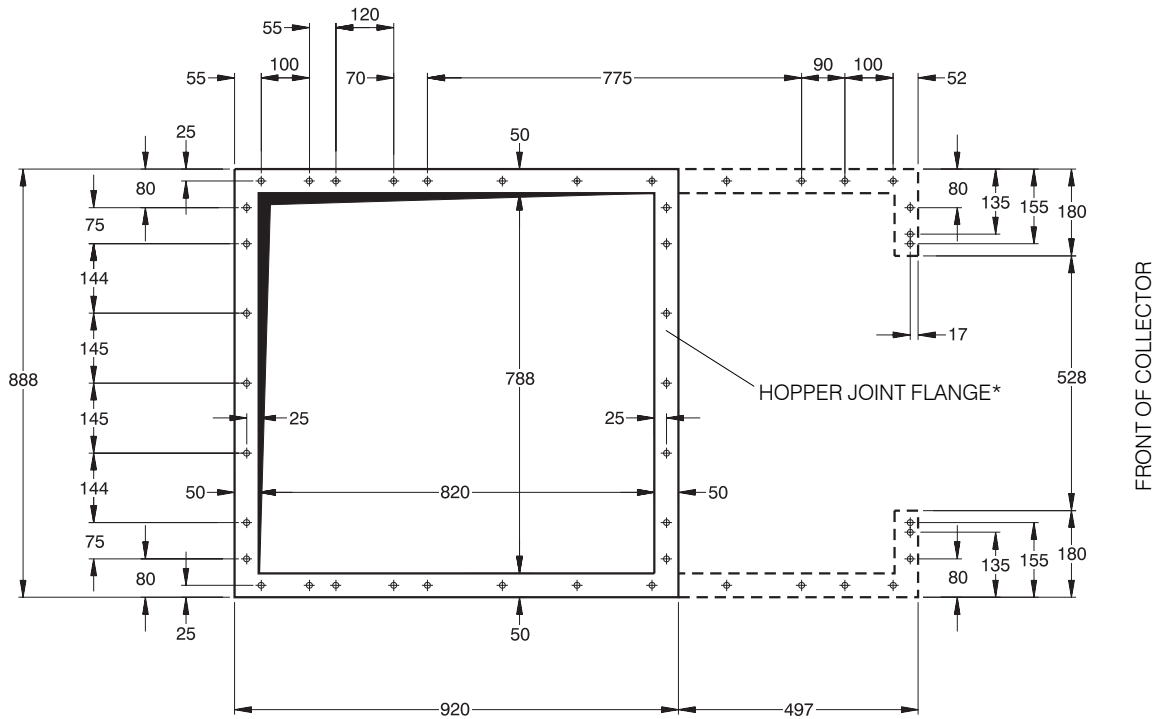
DCE F2012, F2018, S2031 and S2040: 6-way controller

DCE F2024, F2036, S2053 and S2080: 8-way controller

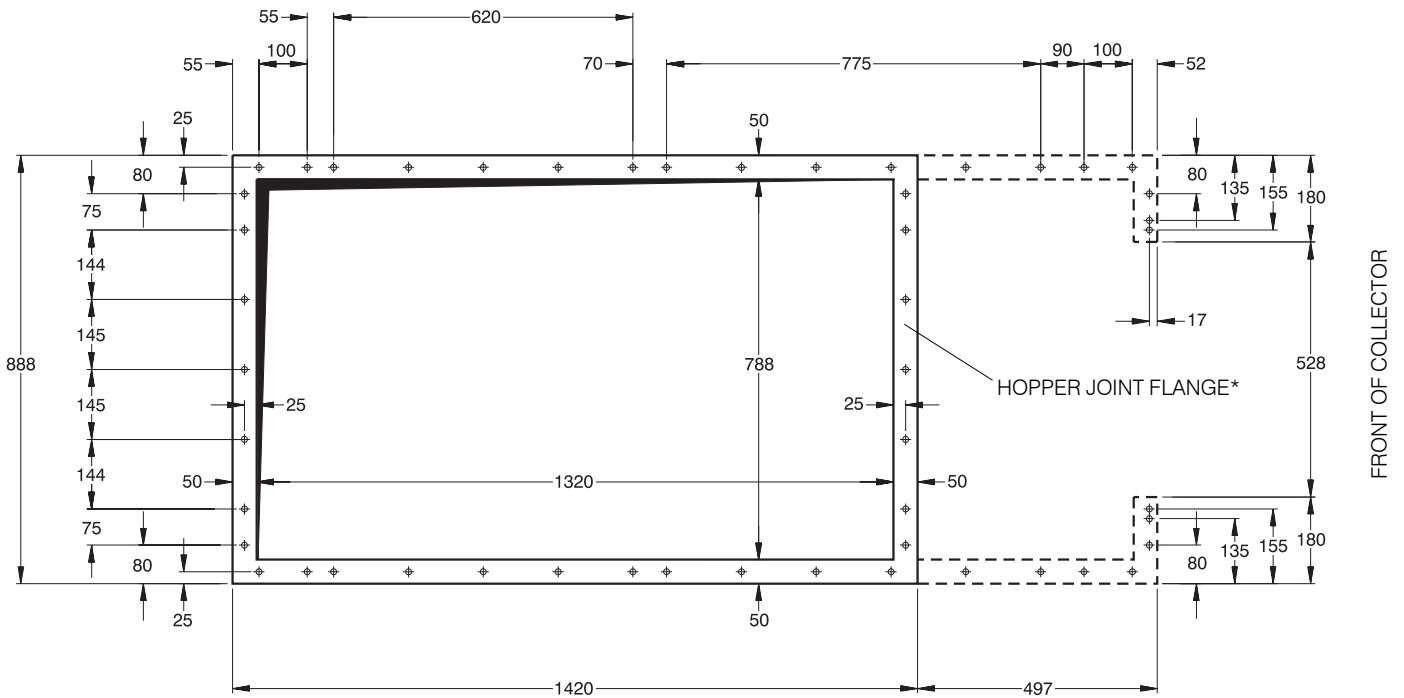
DCE F2030, F2045, S2066 and S2100: 10-way controller

Voltage input: AC version: 105-120V, 200-240V ±10% DC version: 24V

Fan motor: To suit local voltage



DCE F2012 H

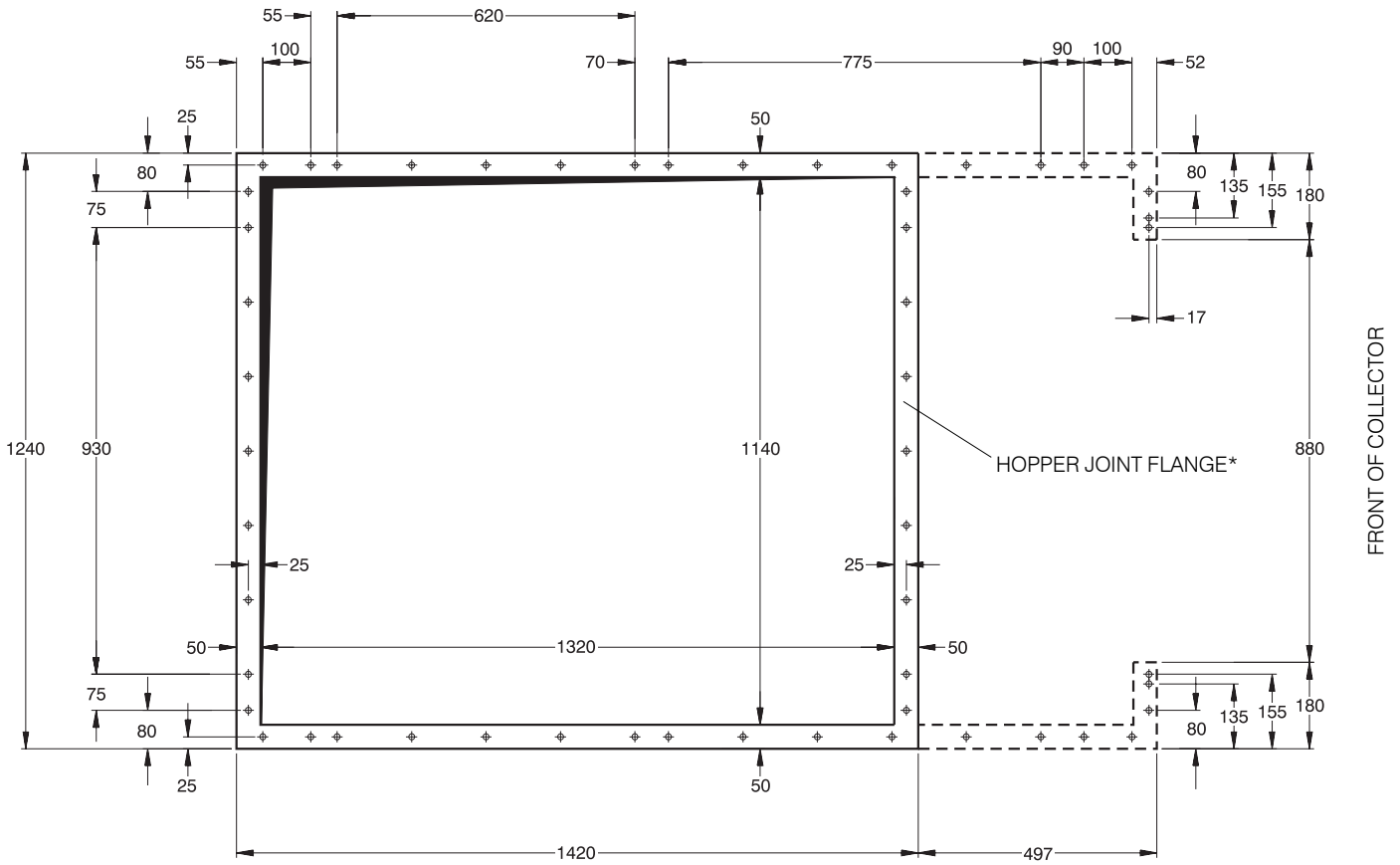


DCE F2018 H, S2021 H, S2026 H, S2031 H and S2040 H

Aperture and mounting flange details for hopper type collectors

All holes $\varnothing 12\text{mm}$ for M10 set screws. Pitch centres: 155mm

*NOTE: Access will be required to the underside of the hopper joint flange, e.g. via customer upstand



DCE F2024 H, F2030 H, F2036 H, F2045 H, S2053 H, S2066 H, S2080 H and S2100 H

Aperture and mounting flange details for hopper type collectors

All holes \varnothing 12mm for M10 set screws. Pitch centres: 155mm

*NOTE: Access will be required to the underside of the hopper joint flange, e.g. via customer upstand

DESIGN LIMITS (standard equipment)

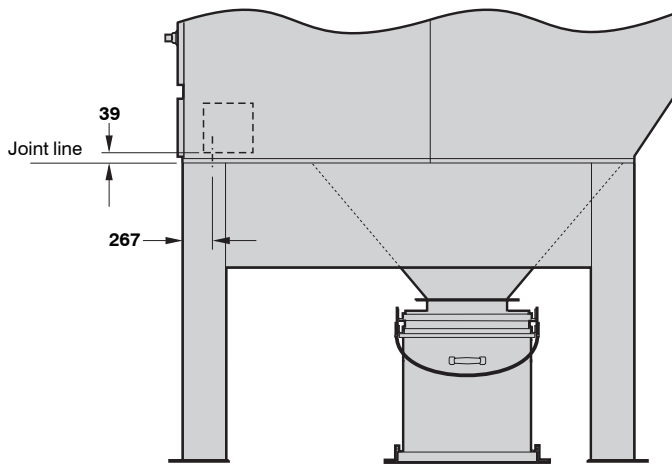
Temperature range: -10° to $+60^{\circ}$ C

Pressure limits: Collector with fan: as fan performance curves from shut-off to operating pressure
Collector without fan: -500 mm W.G. (For positive pressures refer to Donaldson)

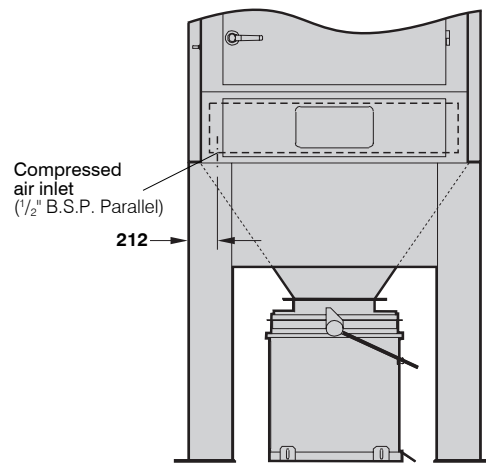
Dimension tolerances: ± 5 mm on main dimensions; ± 2 mm on detail dimensions

Equipment is available suitable for use in a potentially explosive atmosphere (Directive 94/9/EC) satisfying the requirements for group II category 2G[†] or 2D and 3G or 3D T135°C

[†] Not suitable for collectors fitted with sintered elements



SIDE ELEVATION



FRONT ELEVATION

Position of compressed air connection to collector for standard and venting type collectors with dust container or rotary valve*

*For collectors supplied with PT controller or optional compressed air assembly, refer to page 17

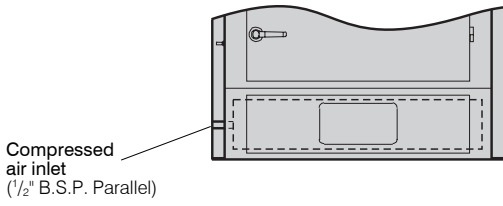
COMPRESSED AIR REQUIREMENTS

Type	Working compressed air pressure ^a		Atmospheric air volume – F.A.D. ^b		Pulse duration
			at 18 sec. intervals ^c		
DCE F2012	3.4 bar	50 psig	3.0 m ³ /h	1.8 cfm	60 millisec.
DCE F2018	3.4 bar	50 psig	3.4 m ³ /h	2.1 cfm	60 millisec.
			at 12 sec. intervals ^c		
DCE F2024	3.4 bar	50 psig	7.4 m ³ /h	4.4 cfm	60 millisec.
DCE F2030	3.4 bar	50 psig	7.4 m ³ /h	4.4 cfm	60 millisec.
DCE F2036	3.7 bar	55 psig	9.5 m ³ /h	5.6 cfm	60 millisec.
DCE F2045	3.7 bar	55 psig	9.5 m ³ /h	5.6 cfm	60 millisec.
DCE S2021	5.2 bar	75 psig	8.9 m ³ /h	5.2 cfm	60 millisec.
DCE S2026	5.2 bar	75 psig	8.9 m ³ /h	5.2 cfm	60 millisec.
DCE S2031	5.2 bar	75 psig	8.9 m ³ /h	5.2 cfm	60 millisec.
DCE S2040	5.2 bar	75 psig	8.9 m ³ /h	5.2 cfm	60 millisec.
DCE S2053	5.2 bar	75 psig	13.0 m ³ /h	7.7 cfm	60 millisec.
DCE S2066	5.2 bar	75 psig	13.0 m ³ /h	7.7 cfm	60 millisec.
DCE S2080	5.2 bar	75 psig	14.8 m ³ /h	8.7 cfm	60 millisec.
DCE S2100	5.2 bar	75 psig	14.8 m ³ /h	8.7 cfm	60 millisec.

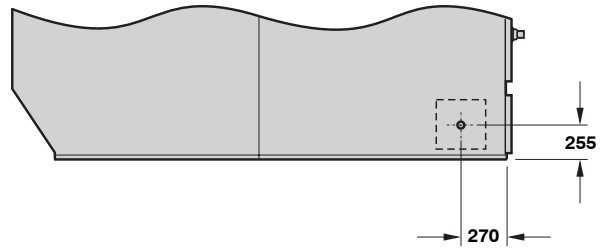
^a Normal operating pressure

^b Recommended atmospheric air volume of clean, dry compressed air

^c Recommended initial settings; these may be varied with experience



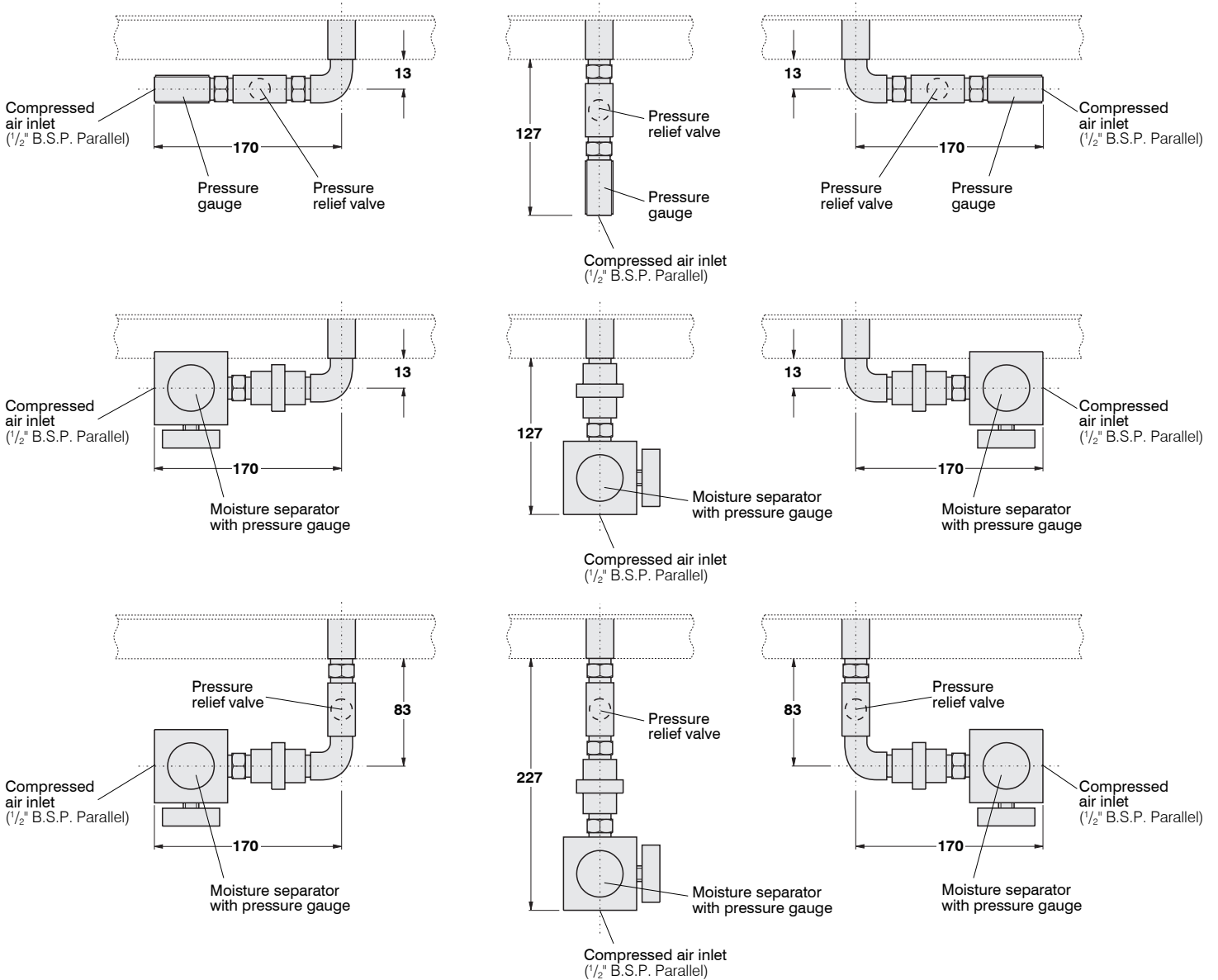
FRONT ELEVATION



SIDE ELEVATION

Position of compressed air connection to collector for hopper type collectors and all collectors supplied with PT controller or optional compressed air assembly

May be fitted either side – specify preferred side at time of order (standard position: left-hand side)

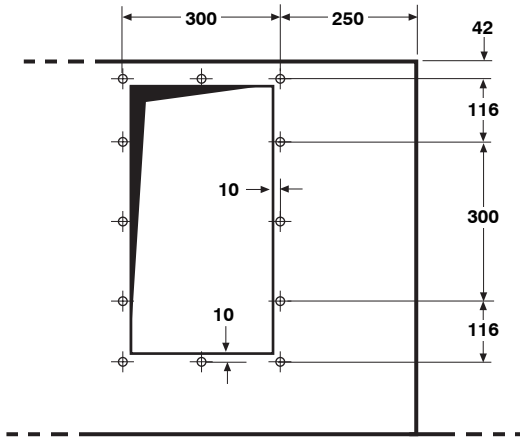


PLAN ELEVATIONS

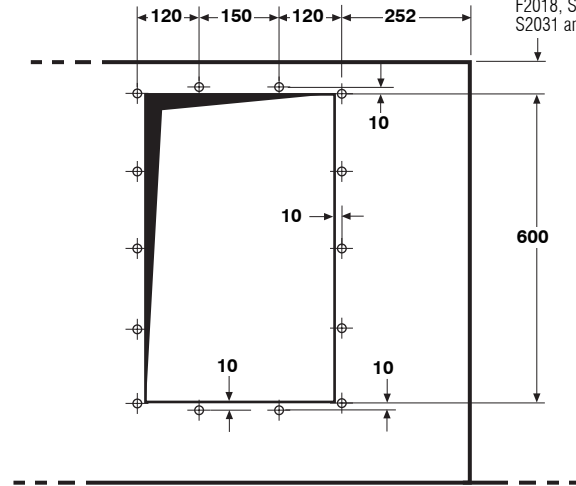
Optional compressed air assembly details showing alternative arrangements

66 for DCE F2024, F2030, F2036, F2045, S2053, S2066, S2080 and S2100

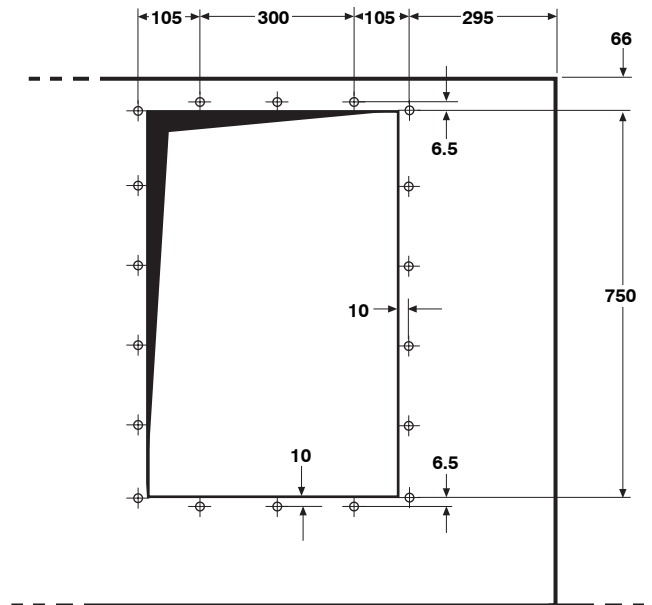
116 for DCE F2012, F2018, S2021, S2026, S2031 and S2040



DCE F2012, F2018, S2021, S2026, S2031 and S2040
with K3, K5 or K7 type fans



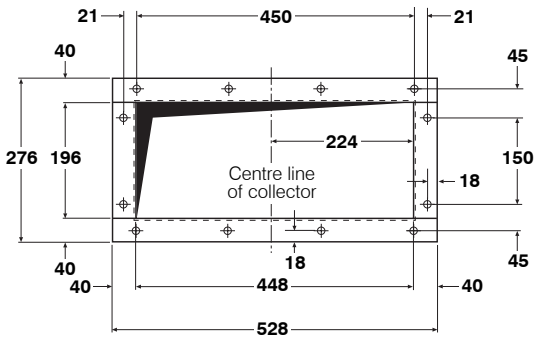
DCE F2024, F2030, F2036, F2045, S2053, S2066, S2080
and S2100 with K3, K5, K7, K10 or K11 type fans.
DCE F2012, F2018, S2021, S2026, S2031 and S2040
with SF40, SF55 or SF75 type fans



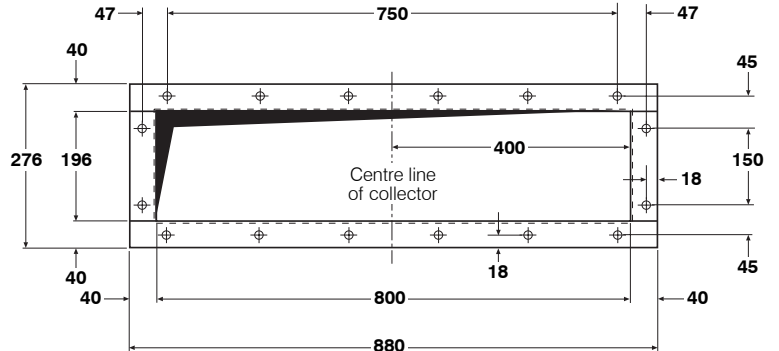
DCE F2024, F2030, F2036, F2045, S2053, S2066, S2080 and S2100
with SF40, SF55, SF75, SF110, SF150 or SF185 type fans

Cleaned air outlet details for standard and hopper type collectors
(with outlet grille removed)

All holes threaded for M6 set screws. Pitch centres: 150mm except where shown



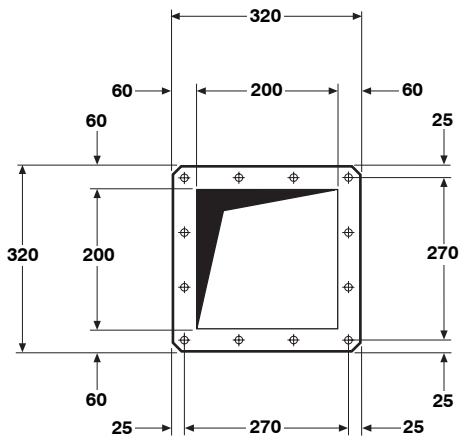
**DCE F2012, F2018,
S2021, S2026, S2031 and S2040**



**DCE F2024, F2030, F2036, F2045,
S2053, S2066, S2080 and S2100**

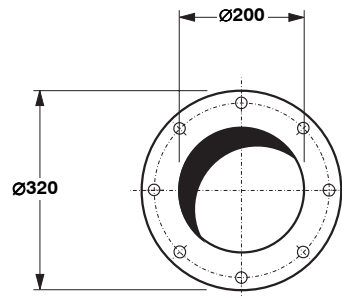
Contaminated air inlet and venting type collector cleaned air outlet details

All holes \varnothing 12mm for M10 set screws. Pitch centres: 150mm



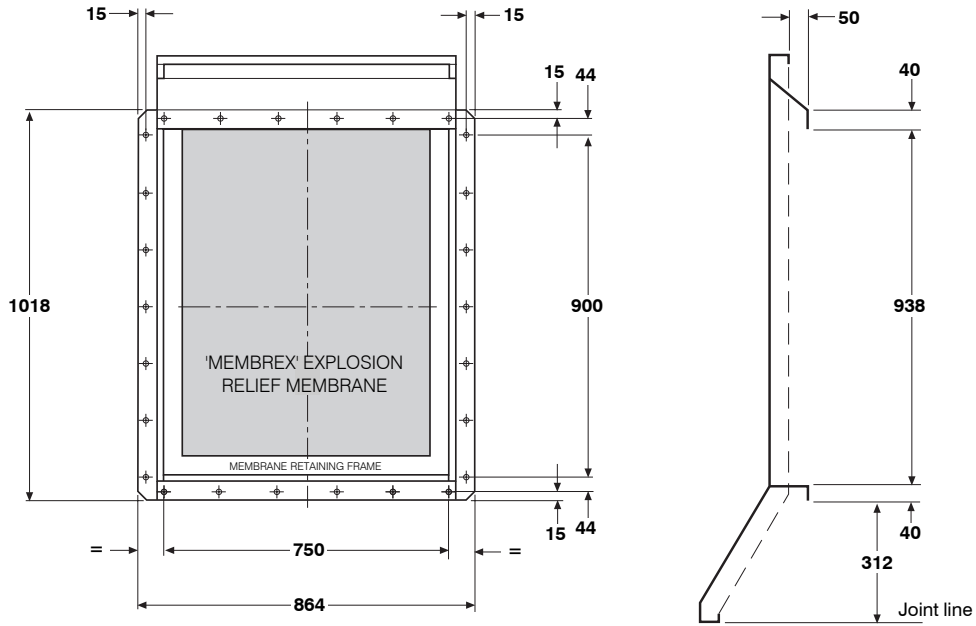
Rotary valve hopper outlet flange

All holes \varnothing 12mm for M10 set screws. Pitch centres: 90mm

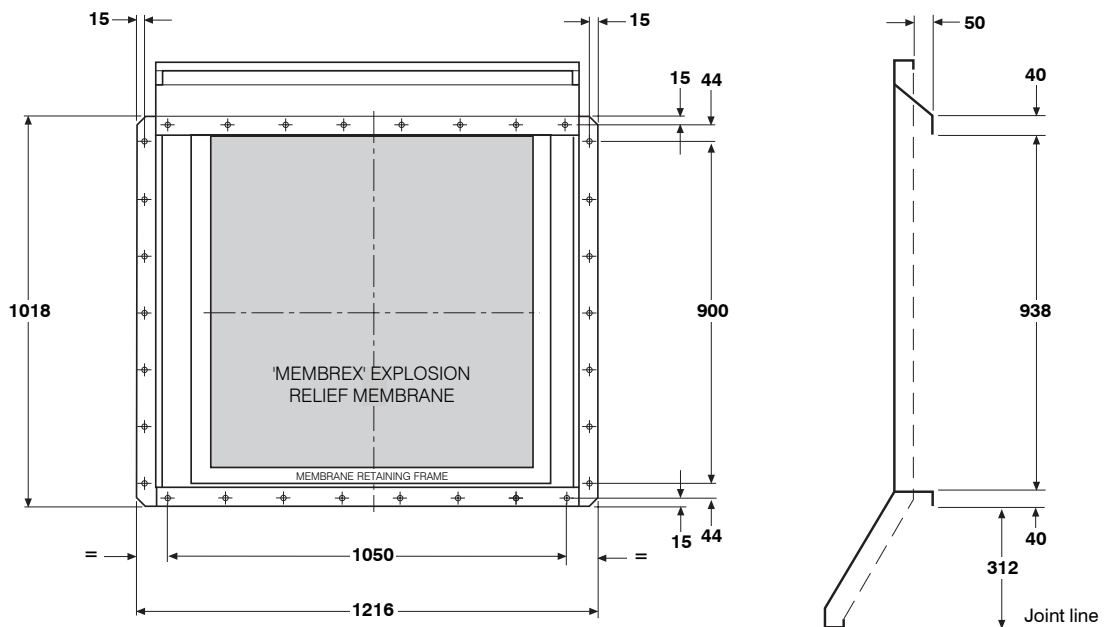


**Rotary valve outlet flange
(for rotary valve supplied by Donaldson)**

All holes \varnothing 14mm for M12 bolts equally spaced on 280mm p.c.d.
Flange is 10mm thick



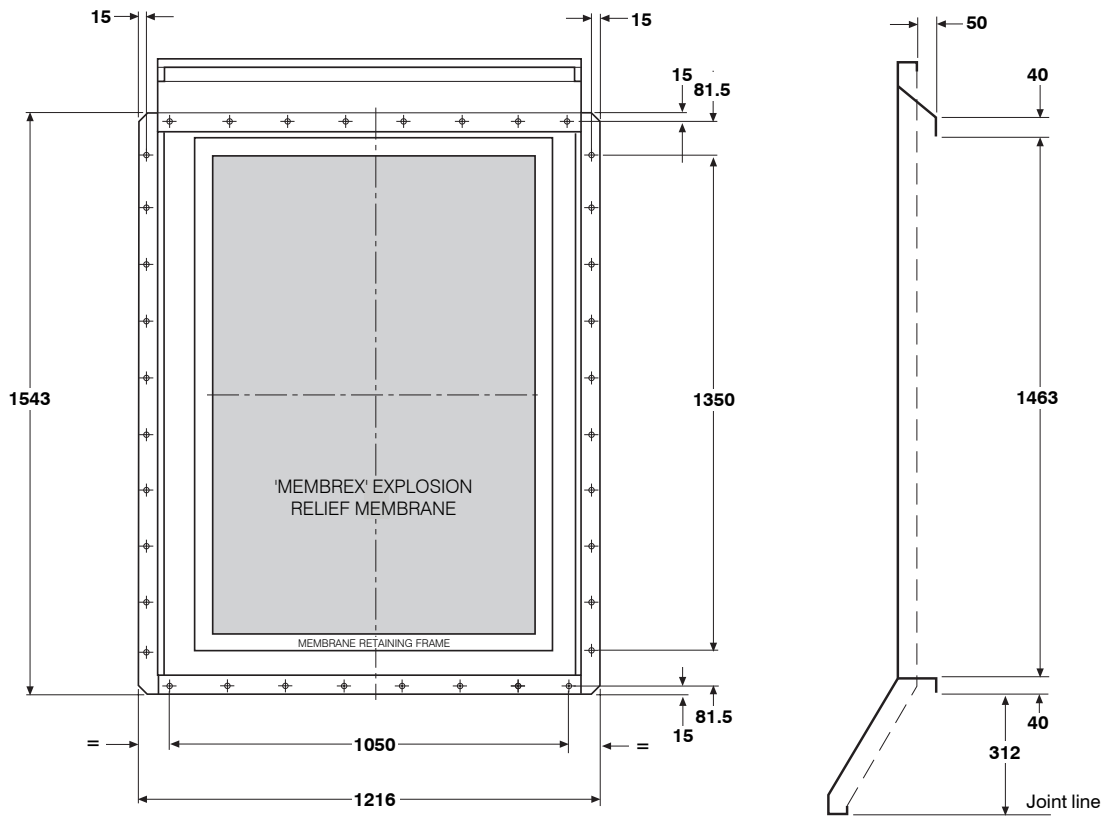
DCE F2012, F2018, S2021, S2026, S2031 and S2040



DCE F2024, F2030, S2053 and S2066

Rear explosion relief flange mounting details

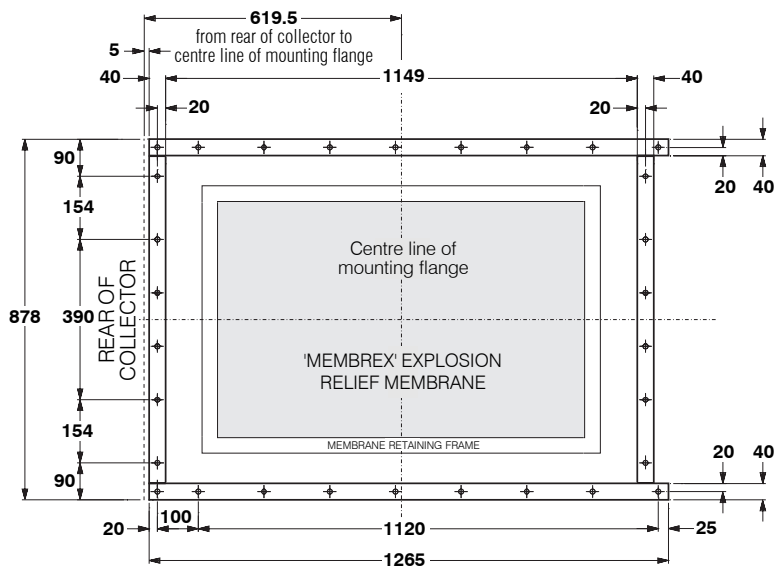
All holes $\varnothing 12\text{mm}$ for M10 set screws. Pitch centres: 150mm



DCE F2036, F2045, S2080 and S2100

Rear explosion relief flange mounting details

All holes $\varnothing 12\text{mm}$ for M10 set screws. Pitch centres: 150mm



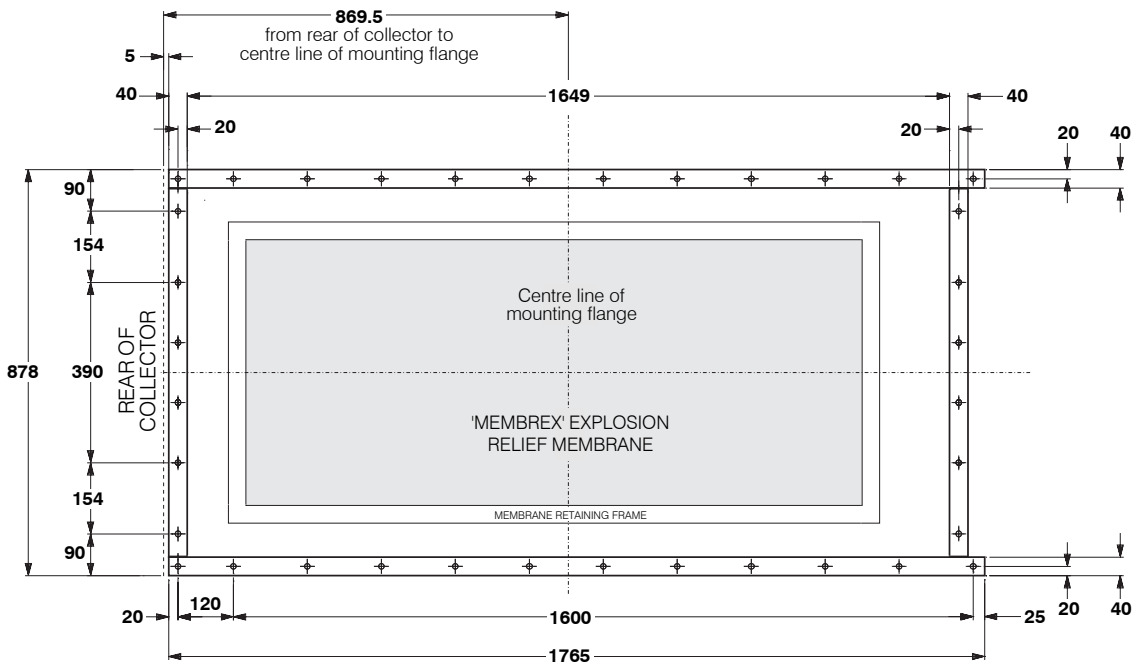
DCE F2012*

All holes $\varnothing 12\text{mm}$ for M10 set screws. Pitch centres: 160mm horizontally; 130mm vertically, except where shown

Top explosion relief flange mounting details

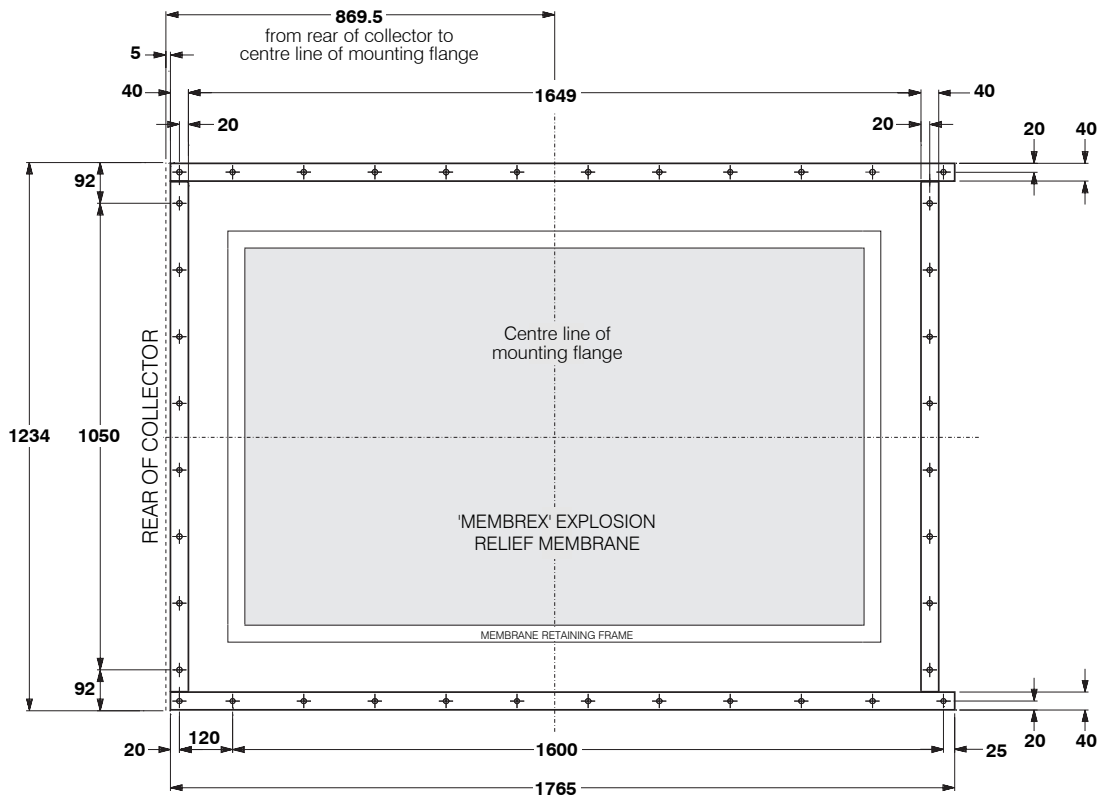
Mounting flange projects 100mm beyond top of collector

*NOTE: Top explosion relief is only available on venting type collectors without secondary or absolute filter



DCE F2018*, S2021*, S2026*, S2031* and S2040*

All holes \varnothing 12mm for M10 set screws. Pitch centres: 160mm horizontally; 130mm vertically, except where shown



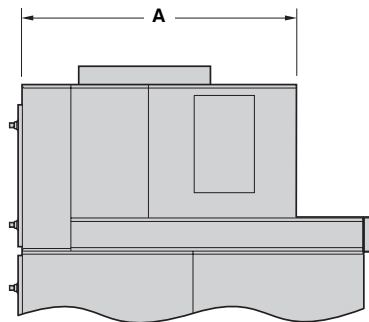
DCE F2024*, F2030*, F2036*, F2045*, S2053*, S2066*, S2080* and S2100*

All holes \varnothing 12mm for M10 set screws. Pitch centres: 160mm horizontally; 150mm vertically, except where shown

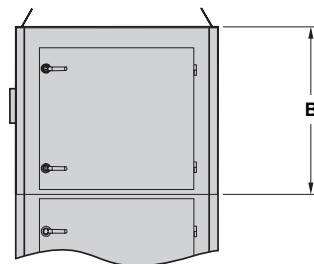
Top explosion relief flange mounting details

Mounting flange projects 100mm beyond top of collector

*NOTE: Top explosion relief is only available on venting type collectors without secondary or absolute filter



SIDE ELEVATION



FRONT ELEVATION

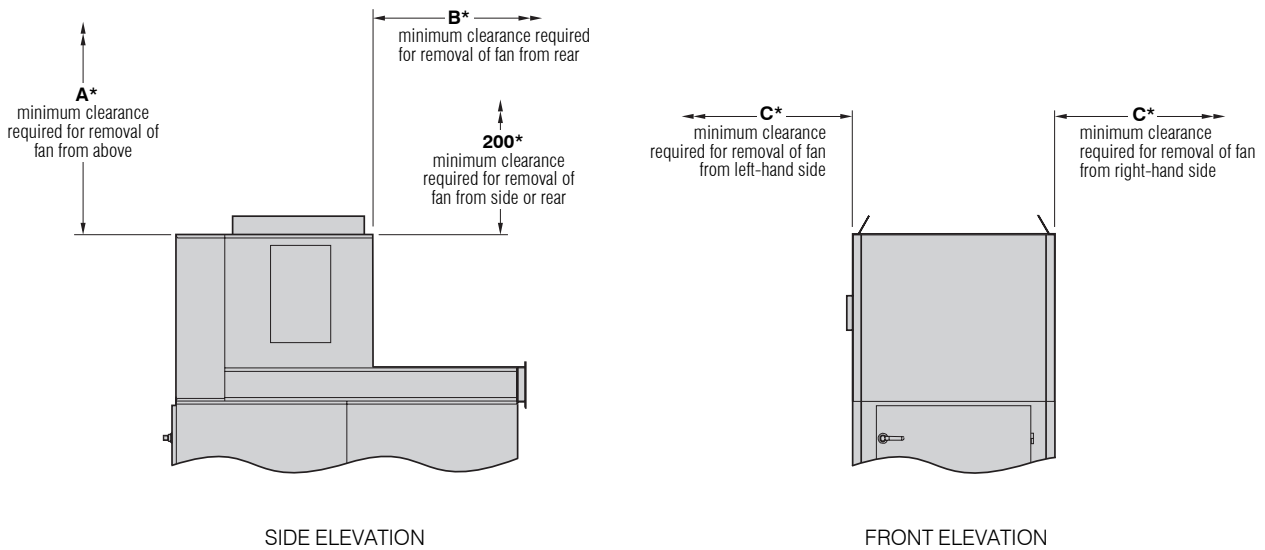
DCE 2000 series dust collector including details for optional secondary filter or absolute filter

DCE F2036 or F2045 with secondary filter illustrated

All other dimensions are as indicated on pages 1 to 3, depending on the type of collector

SPECIFICATIONS

Type	Fan type	DIMENSIONS in mm	
		A	B
DCE F2012			
Unit only	K3, K5 or K7 SF40, SF55 or SF75	1210	925
		1210	1125
Unit with secondary filter or absolute filter	K3, K5 or K7 SF40, SF55 or SF75	1530	925
		1530	1125
DCE F2018			
Unit only	K3, K5 or K7 SF40, SF55 or SF75	1210	925
		1210	1125
Unit with secondary filter or absolute filter	K3, K5 or K7 SF40, SF55 or SF75	1530	925
		1695	1125
DCE F2024, F2030 F2036 and F2045			
Unit only	K3, K5, K7, K10 or K11 SF40, SF55, SF75, SF110, SF150 or SF185	1210	1025
		1620	1225
Unit with secondary filter or absolute filter	K3, K5, K7, K10 or K11 SF40, SF55, SF75, SF110, SF150 or SF185	1690	1025
		2100	1225
DCE S2021, S2026 S2031 and S2040			
Unit only	K3, K5 or K7 SF40, SF55 or SF75	1210	925
		1210	1125
Unit with secondary filter or absolute filter	SF40, SF55 or SF75	1695	1125
DCE S2053 and S2066			
Unit only	K3, K5, K7, K10 or K11 SF40, SF55, SF75, SF110, SF150 or SF185	1210	1025
		1620	1225
Unit with secondary filter or absolute filter	SF40, SF55, SF75, SF110, SF150 or SF185	2100	1225
DCE S2080 and S2100			
Unit only	K3, K5, K7, K10 or K11 SF40, SF55, SF75, SF110, SF150 or SF185	1210	1025
		1620	1225



DCE 2000 series fan removal details

DCE F2036 or F2045 illustrated

Fan assembly type:	K3	K5	K7	K10	K11	SF40	SF55	SF75	SF110	SF150	SF185
Dimension A*:	700 mm	700 mm	700 mm	780 mm	830 mm	880 mm	880 mm	875 mm	980 mm	940 mm	985 mm
Dimension B*:	590 mm	590 mm	640 mm	695 mm	725 mm	680 mm	705 mm	745 mm	1025 mm	1070 mm	1060 mm
Dimension C*:	590 mm	590 mm	565 mm	695 mm	720 mm	810 mm	810 mm	810 mm	900 mm	895 mm	990 mm
Weight:	55 kg	70 kg	105 kg	125 kg	185 kg	146 kg	150 kg	202 kg	246 kg	282 kg	435 kg

* Measurements are for removal of fan assembly only and do not include clearances required for lifting equipment
All weights shown indicate heaviest configuration